

FDA CE
1984



AGS Medikal Urunleri Ith. Ihr. Tic. A.S.
Katip Salih Sok. No: 111 34718 Koşuyolu / Istanbul / Turkey
T +90 216 546 00 78 F +90 216 546 00 79

implance.com

March2021Rev02



IMPLANCE
Dental Implant System

Contents

Implance Dental Implant System	5
Research and Development	6
Quality Assurance	6
Sterile Environment Standards	7
Production	7
Quality Control System	8
Sterilization Standards	8
Product Traceability	11
Packaging and Labelling	12
Implance Dental Implant Systems	15
Design Features	16
RBM Surface	17
EDS Analysis	18
SURGERY	
Bone Level Implants	23
Aggressor Bone Level	25
Tissue Level Implants	27
Surgical Protocol	29
Self-Stopper Drills	30
Auxiliary Drills	30
Surgical Kit Components	31
Implant Drill Table	33
Aggressor Surgical Protocol	39
Aggressor Self-Stopper Drills	40
Aggressor Auxiliary Drills	40
Aggressor Implant Drill Table	42
Short Implant	43
Short Implant Fixture Drill Table	45
Short Implant Surgical Protocol	47
Short Implant Self-Stopper Drills	48
Short Implant Auxiliary Drills	49
Zygoma Implant	51
Zygoma Implant Surgical Protocol	55
PROSTHESIS	
Abutment Connection Types	61
Healing Abutments	61
Temporary Abutments	62
Single Crown and Bridge Restorations	63
Bone Level Solid System	65
Bone Level Couple System	67
Bone Level Short Couple System	69
Bone Level Octa System	71
Tissue Level Solid System	73
Tissue Level Couple System	75
Tissue Level Octa System	77
Removable Restorations	79
O-Ring System	81
Locator System	83
Bar System	85
Hybrid Restorations	87
Bone Level Multi-Unit System	89
DIGITAL DENTISTRY	91
Bone Level	93
Tissue Level	94
Ti-Base Abutment	95
Multi-Unit Abutment	96
Octa Abutment	96
Premill Custom Abutment	97
Abutment Planning Kit	98
Index	101

Success

Implance Dental Implant System



AGS Medikal is the largest manufacturer of Dental Implant Systems in Turkey. In collaborations with international experts of Dental Implantology, Implance has played an important role in promoting the dental implant industry in Turkey and the rest of the world by developing new products to fulfill the needs of this demanding sector.

With a widespread distribution network **Implance** enables you to find quality with affordable prices closer to you wherever you are in the world. We invest heavily in technological productions and further development of our qualified employees.

Implance is the first FDA* approved dental implant brand made in Turkey that has entered the U.S. market with our high standards of quality and remarkable service.

* Food and Drug Administration



Implance Research & Development



Implance Implant System rates research and development very high and consider it vital for the industry growth and for developing innovative solutions based on the needs of our customers. Scientific projects are carried out in partnership with international experts and academic institutions to apply the most up-to-date research & techniques to our products range.

AGS Medikal collaborates with leading world renowned institutions of the developed world in countries like Switzerland, Italy and South Korea for their products research.



Quality Assurance



Quality; All Implance Dental Implant System products have ergonomic design and are bio-compatible. The whole range of products are checked by our expert teams at every stage starting from production planning to delivery and they reach our physicians with 100% Implance quality guarantee.

Guarantee; All Implance Dental Implant System products are manufactured under ultra modern conditions with utmost perfection. We promise lifetime replacement warranty against implant fractures and screw loosening if used with our correct recommendations.

Service Network; Implance Dental Implant System headquarters are in Istanbul, being central to the world it is easily accessible to our dealers internationally. Our experienced sales team- specialists in their field, are committed to stand by your side whenever you need them throughout the sale process.



Sterile Environment Standards



All Impliance-brand products are packaged in the sterile room that fulfills sterile environment conditions according to ISO Class 7* and air cleanliness classification standards according to ISO 14644-1.

The sterile room is regularly validated according to ISO 14644-2 standards. Validation covers whole range of operations performed and proves that the methods used continuously and accurately fulfill what is expected by the standards. Thus, when working with the validated method, it is ensured that the process performed is precise, accurate, specific, consistent, valid and reliable.

Surface, air and hand bio-contamination of sterile room is monitored at periodical intervals according to ISO 14698-2 bio-contamination control standard for sterile rooms and related areas.

Production

All Impliance Dental Implant System products are manufactured with Swiss-made CNC machines with micron sensitivity.



Quality Control System

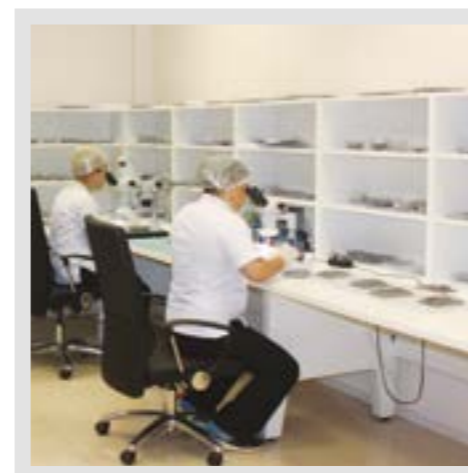
Quality Control Department monitor all Impliance products after production with great attention to ensure our products meet required quality standards.

Products are cross-checked by different quality control officers with optic Mitutoyo-brand devices that is the latest technology in the world with high sensitivity of one per ten thousand (1/10.000). The products which do not pass the quality standards are readily eliminated.



Sterilization Standards

The sterilization validation is conducted in accordance with EN ISO 11137-2. The gamma rays concentration obtained as a result of the validation is used for the gamma irradiation of all our products according to EN ISO 11137-1 Sterilization of Health Care Products - Radiation.



International Success

IMPLANCE
Dental Implant System



FDA

CE
1984

ISO13485
certified

FDA
ISO 13485:2016
Medical Device Directive 93/42/EEC Appendix II.3

Product Traceability

Each product within the Implace Dental Implant System range can be tracked at every stage such as production, stock management and after sales.

Each product packaging has a barcode label, which matches with the lot numbers created by ERP software system and thus tracking process can be conducted flawlessly.



AGS Medikal tracks all processing stages, from production to delivery.



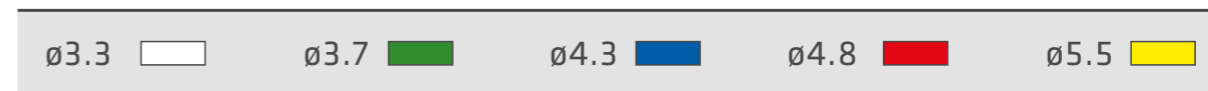
Packaging and Labeling

PACKAGING; Implace Implants are packed in double sterile packaging. This specifically developed packaging system perfectly protects the hygienic state of the product and it provides ease of use to our clinicians by virtue of its smart-peg system.

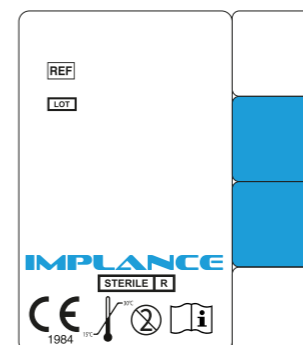
The smart-peg implant holders provides extra convenience by directly transferring the implant through implant drivers without any intermediate transfer methods.

LABELING; Each product package has a label containing all necessary information and coding such as type, length and color code to distinguish the different sizes easily.

Color coding and the associated diameters of our products;



Labels on our packages have all the relevant information and codes related to the product. Each product can be easily tracked and traced with the help of these codes.



- Refer to usage instructions.
- Single use only.
- Catalog number.
- Lot code.
- Use before expiry date.
- Date of production.
- Manufacturer.
- Sterilized by irradiation.
- Do not use damaged packages.
- Temperature limitation.



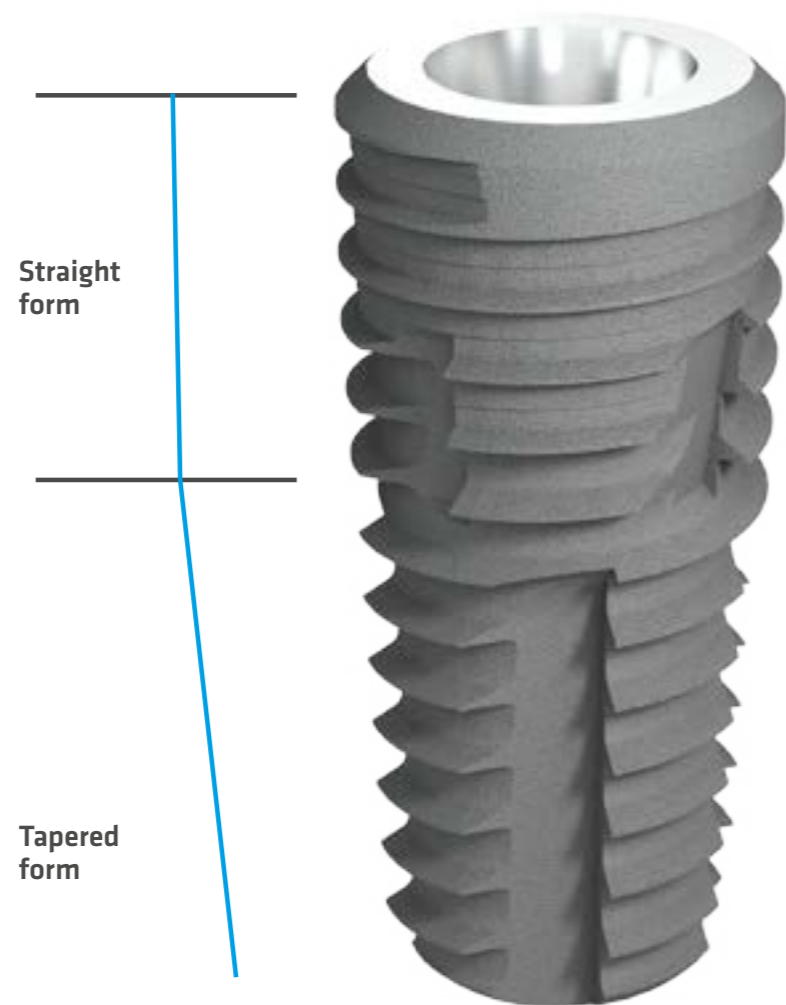
Discipline

Implance Dental Implant System

Implance, has surface and design features meeting international standards. Implance is a user-friendly dental implant system with simple to use surgical kit and unmatched quality.

The Implance Dental Implant System has a wide range of products in various diameters suitable for all kinds of indications.

- Bone level
- Tissue level
- Short implant
- Zygoma implant

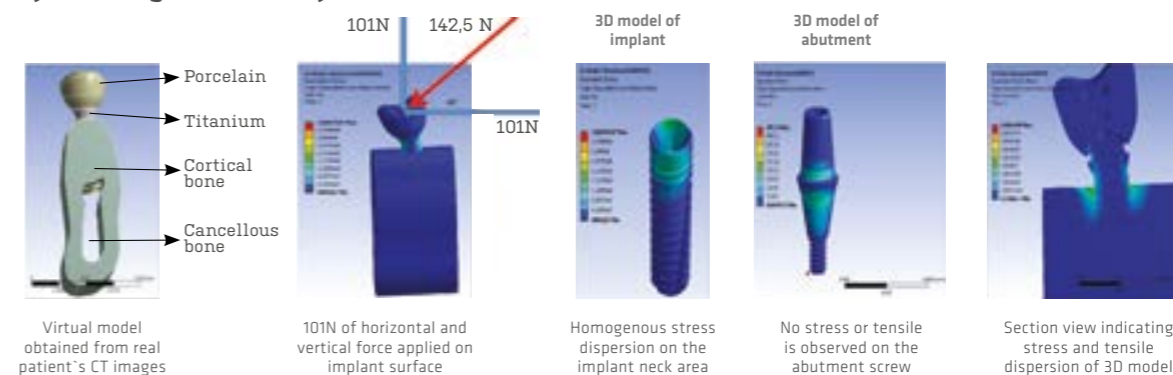


Design Features

Hybrid Design: This unique design is an ideal combination of cylindrical and conical implant designs.

The hybrid design implant has advantages of both design types and is successful in finding its own way through the drilled cavity. The apical part is conical and its neck area is cylindrical, this combination not only increases the contact surface area, it also does not cause compression, stress and bone loss at the crest in the long term. Furthermore, with this design and thread structure it is easy to achieve primary stability even in low density bone areas.

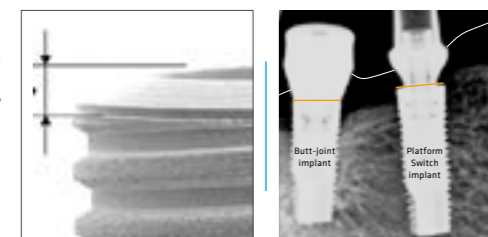
Hybrid design stress analysis



Literature indicating stress analysis

Finite element analysis of 3 dental implant designs at different straight/tapered ratios. International Journal of Oral and Maxillofacial Surgery, Volume 40, Issue 10, October 2011, Page 1138.

Platform Switch: Implance Implants have platform switch feature which protects cervical bone by moving the connection between implant and abutment away from bone surface, thus avoiding micro gaps and bacterial growth.



Thread Design: Implance Implants have a unique thread design which does not transfer stress to the bone while insertion. It has cutting edge and self-cutting features which provide ideal primary stability with every type of bone minimizing transfer of stress to the bone due to its semi-aggressive thread design.

Micro Threadless Structure: The absence of micro threads at the neck of Implance Implants provide many advantages for our users. The risk of bone resorption at the neck will decrease with the implant design without micro threads because colonization of bacterial plaque is less likely.

Impeccable Internal Structure and Conical Connection: Implance Dental Implant System provides excellent compatibility between the abutment and implant with no micro-gap. This feature makes Implance implants last longer and helps avoid fracture or abutment screw loosening.



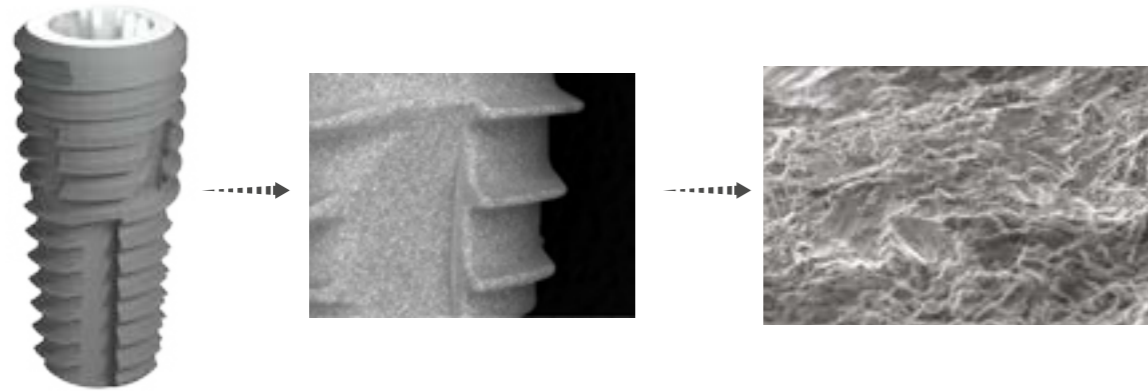
Intra implant thread design

X 80

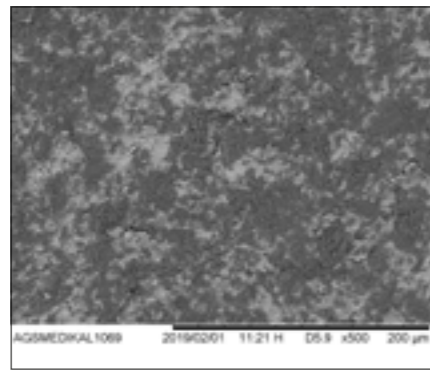
SEM image of ø 3.7x8 mm internal section

RBM Surface (Resorbable Blasting Media)

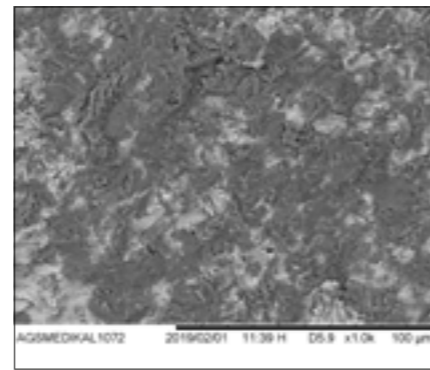
RBM surface ensures faster and better osseointegration quality and matches the bone morphology closely



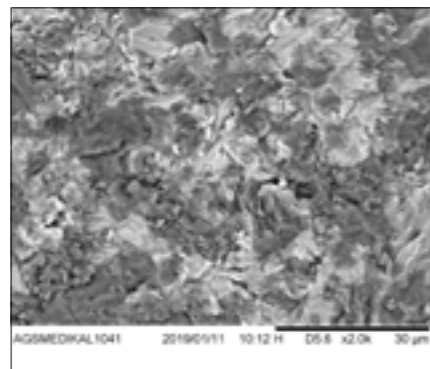
Excellent values that provide faster and higher quality osseointegration and adaptation to bone morphology have been achieved with the Impliance RBM surface.



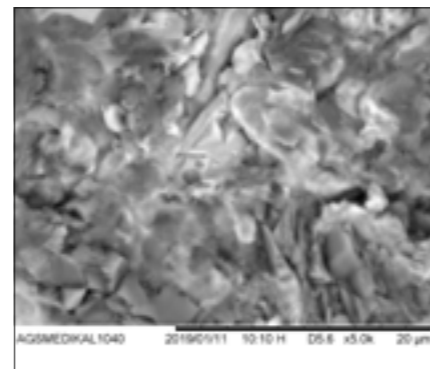
x500



x1000



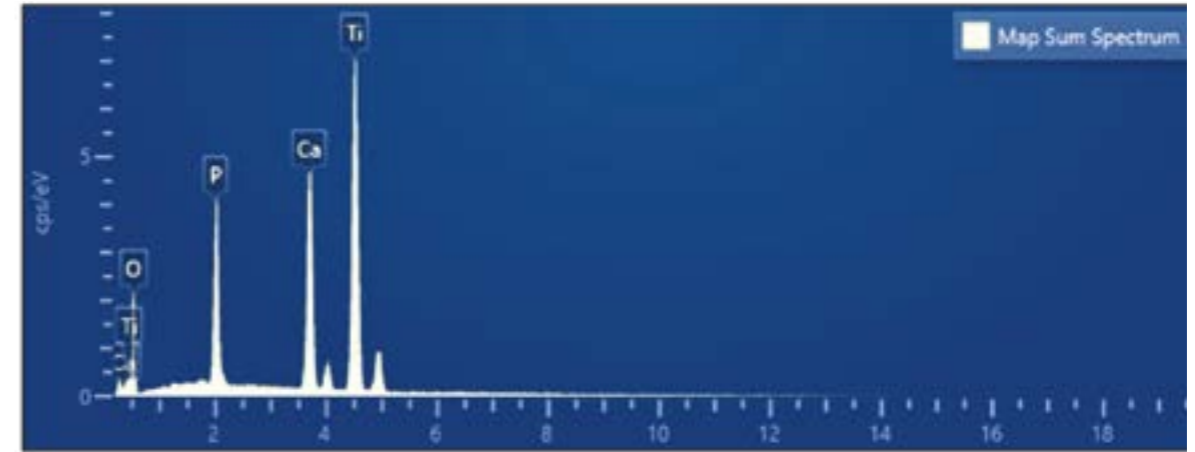
x2000



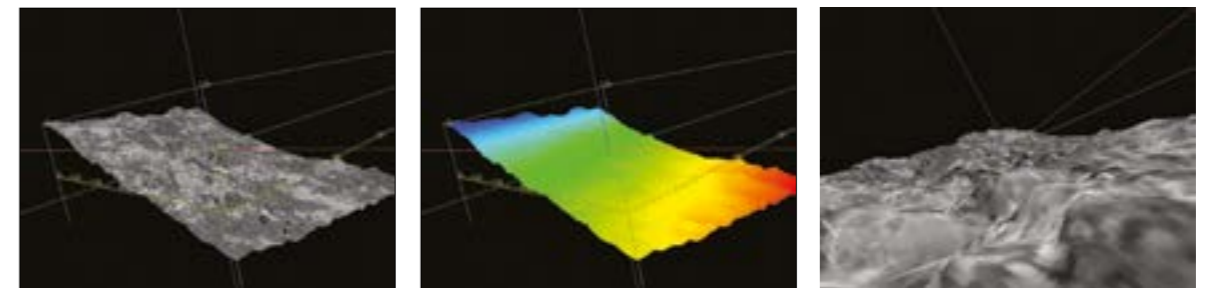
x5000

EDS Analysis;

According to results of EDS Analysis, no foreign substance that can affect osseointegration exists on the surface of Impliance implants. The results obtained from our implant surface tests are better than the common acceptable values of the industry.



Surface Rough Analysis;



No.	RSm(um)	Rlr(%)	Rpm(um)	Rv(um)	Rp(um)	Rq(um)	Ra(um)	Rz(um)	Rz _{0.5} (um)
N	4	4	4	4	4	4	4	4	4
MIN.	16,56	103,18	1,71	2,56	2,74	1,50	1,35	5,58	3,14
MAX.	125,72	106,30	3,16	3,07	6,07	2,09	1,85	8,63	5,58
AVE	53,18	104,98	2,66	2,83	4,15	1,89	1,60	6,98	4,60
SD	49,39	1,35	0,67	0,21	1,49	0,28	0,23	1,33	1,05

SURGERY

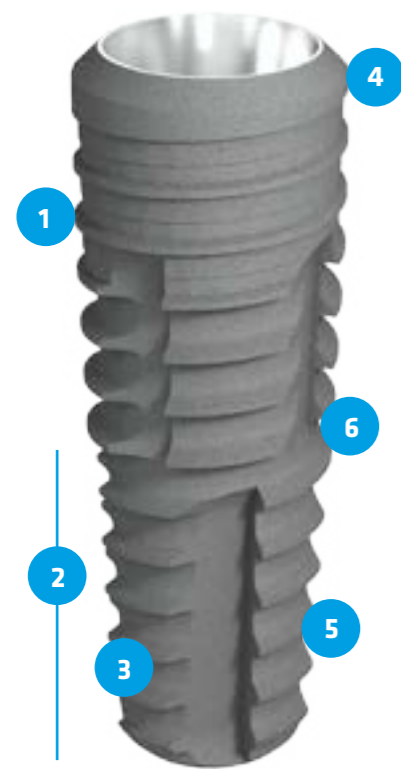




CREATIVE

(Fosbury jump, 1968 - Dick Fosbury tried a new technique while jumping and broke the historic record, changing the fate of the high jump.)

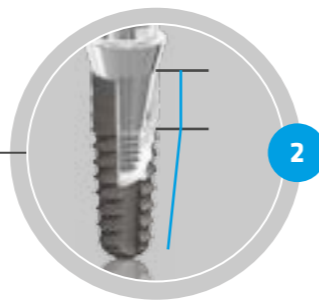
Bone Level



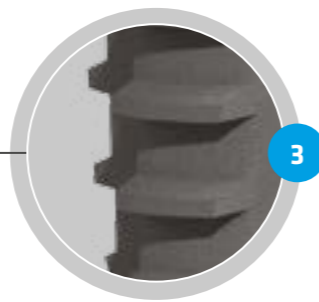
More hygienic neck area that is free of micro threads.



Hybrid design; ideal combination of tapered and cylindrical designs.



RBM surface with improved surface features.



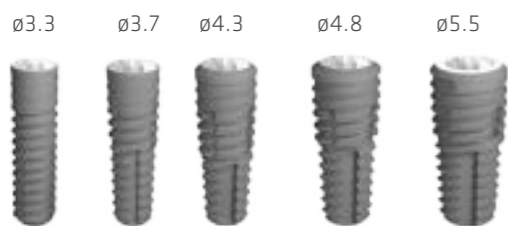
Platform Switch: preserves the cervical bone by moving implant and abutment connection away from the bone surface.



Self-cutting feature.



Thread design which does not transfer stress to the bone.



Bone Level

Bone level implants with platform switch feature avoid bone loss by moving the implant - abutment junction away from the bone surface.

Since the neck area of implant is at the bone level, grey-metallic color of the titanium is hidden, therefore aesthetic results can be achieved.

Selecting an implant with thin diameters is desirable in situations where bone thickness is less in molar area. While preparing for restoration an accurate prosthetic gingival profile can be prepared for the molar by using a wide diameter healing abutment and permanent abutment. Bone level implant is more advantageous if the implant is placed in a submerged position.



ø3.3

Length (mm)	Code
8.0	BMFSR3308
10.0	BMFSR3310
12.0	BMFSR3312
14.0	BMFSR3314



ø3.7

Length (mm)	Code
8.0	BFHR3708
10.0	BFHR3710
12.0	BFHR3712
14.0	BFHR3714



ø4.3

Length (mm)	Code
8.0	BFHR4308
10.0	BFHR4310
12.0	BFHR4312
14.0	BFHR4314



ø4.8

Length (mm)	Code
8.0	BFHR4808
10.0	BFHR4810
12.0	BFHR4812
14.0	BFHR4814

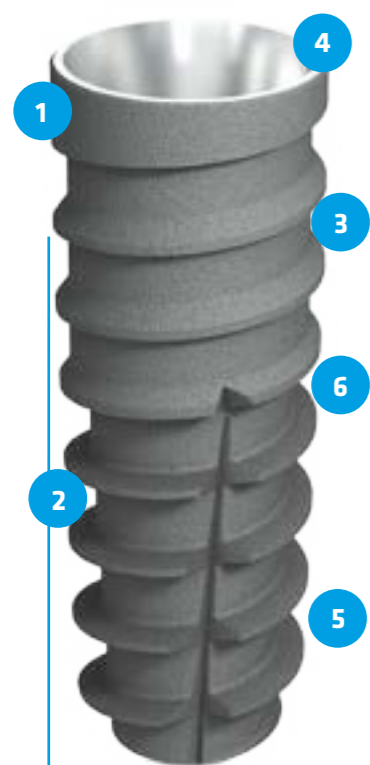


ø5.5

Length (mm)	Code
8.0	BWFHR5508
10.0	BWFHR5510
12.0	BWFHR5512

AGGRESSOR

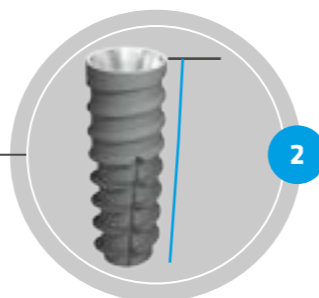
Bone Level



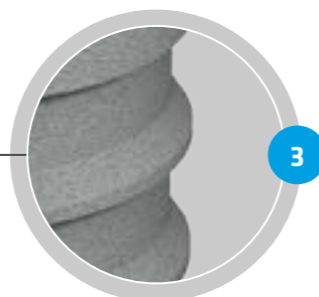
More hygienic neck area that is free of micro threads.



Hybrid design; ideal combination of tapered and cylindrical designs.



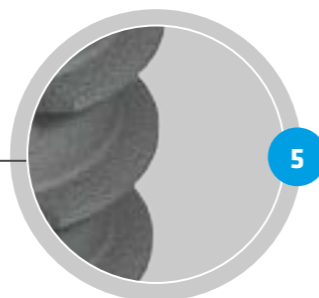
RBM surface with improved surface features.



Platform Switch: preserves the cervical bone by moving implant and abutment connection away from the bone surface.



Self-cutting feature.



Thread design which does not transfer stress to the bone.



ø3.7 ø4.3 ø4.8



AGGRESSOR

Aggressor implant offers the advantage of immediate loading. It does not cause compression at the neck area due to its aggressive thread design and sharper threads towards the apex.

Aggressor implant body design with increased taper towards its apex, provides high primary stability in the extraction sockets and D3-D4 bone types.



ø3.7

Length (mm)	Code
10.0	BFAR3710
12.0	BFAR3712
14.0	BFAR3714



ø4.3

Length (mm)	Code
10.0	BFAR4310
12.0	BFAR4312
14.0	BFAR4314



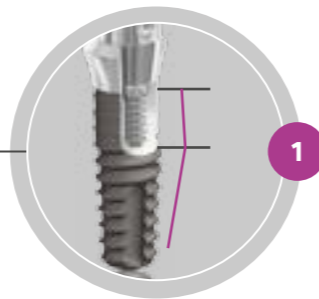
ø4.8

Length (mm)	Code
10.0	BFAR4810
12.0	BFAR4812
14.0	BFAR4814

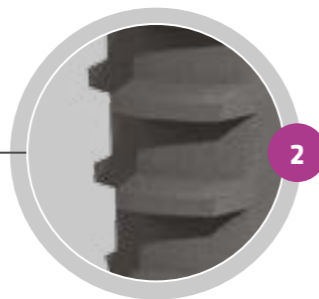
Tissue Level



Hybrid design; ideal combination of tapered and cylindrical designs.



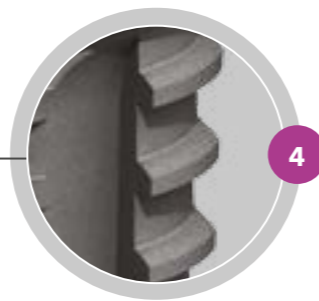
New RBM surface with improved surface features.



Transgingival form which does not allow colonization of bacterial plaque, is free of retentive areas and has strengthened implant - abutment connection.



Self - cutting feature.



Thread design which does not transfer stress to the bone.



Tissue Level

Implant-abutment connections are stronger as compared to the bone level implants.

Tissue level implants are ideal for maintaining cervical bone levels due to the absence of connection until the upper limit of gingiva.

It significantly minimizes the gingival damage around implant during removing and replacing the abutments for the construction of superstructure.



Length (mm)	Code
8.0	TFHR3708
10.0	TFHR3710
12.0	TFHR3712
14.0	TFHR3714



Length (mm)	Code
8.0	TFHR4308
10.0	TFHR4310
12.0	TFHR4312
14.0	TFHR4314



Length (mm)	Code
8.0	TFHR4808
10.0	TFHR4810
12.0	TFHR4812
14.0	TFHR4814



Length (mm)	Code
8.0	TWFHR5508
10.0	TWFHR5510
12.0	TWFHR5512

SURGICAL PROTOCOL

One surgical kit for both bone and tissue level implants.



Self-Stopper Drills

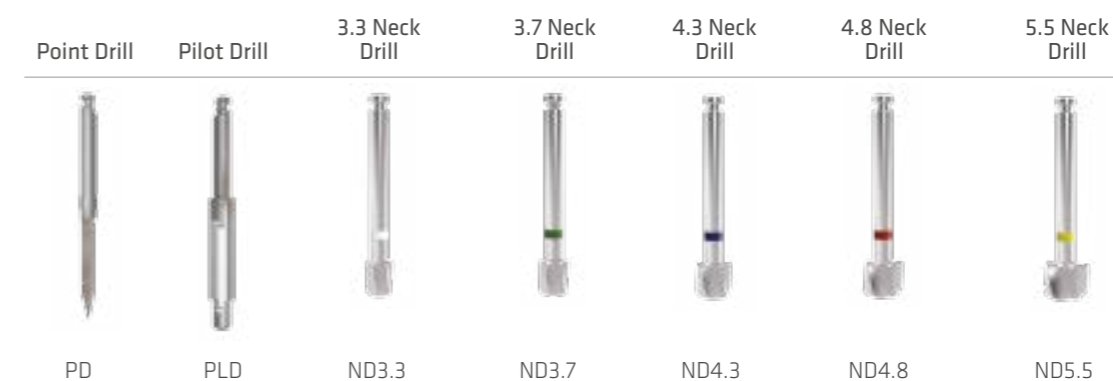
Self-stopper drills provide great convenience to the users and eliminates the possibility of error during the surgery.

Implance system drills can operate at a speed of 200-300 rpm, thus preventing necrosis caused by excessive heat. Another advantage of working at this low speed is that the extracted bone graft during drilling can be collected and used for the same patient.



Auxiliary Drills

The drilling process can be started at the right point with the point drill. Pilot drill is used to expand the drilling cavity for the 2.2 drill. Neck drills reduce the stress that can occur at the neck area of the implant even in the hardest bone.



Surgical Kit Components

RATCHET

Ratchet Bone Level



Short / Long
BFDRS / BFDRL

Ratchet Tissue Level



Short / Long
TFDRS / TFDRL

Ratchet ø3.3 Mini



Short / Long
BMFDRS / BMFDRL

1.2 Hex Driver



Short / Long
1.2HDRS / 1.2HDRL

Hand Piece

Hand Piece Bone Level



Short / Long
BFDMS / BFDML

Hand Piece Tissue Level



Short / Long
TFDMS / TFDML

Hand Piece ø3.3 Mini



Short / Long
BMFDMS / BMFDML

Solid Driver



Parallel Pin



Depth Gauge

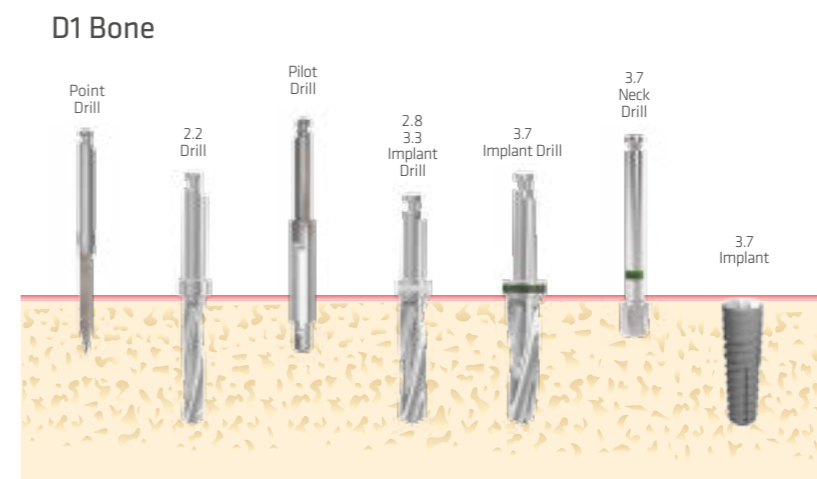
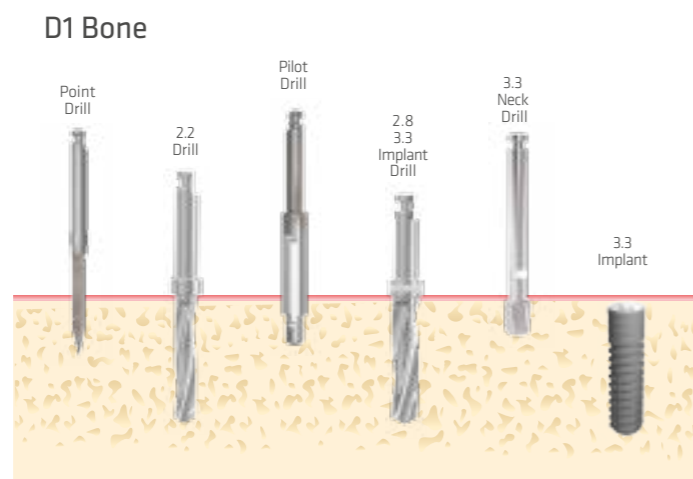
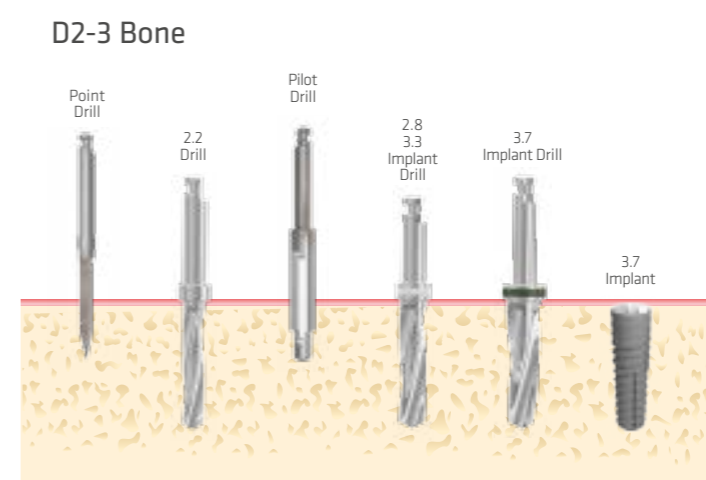
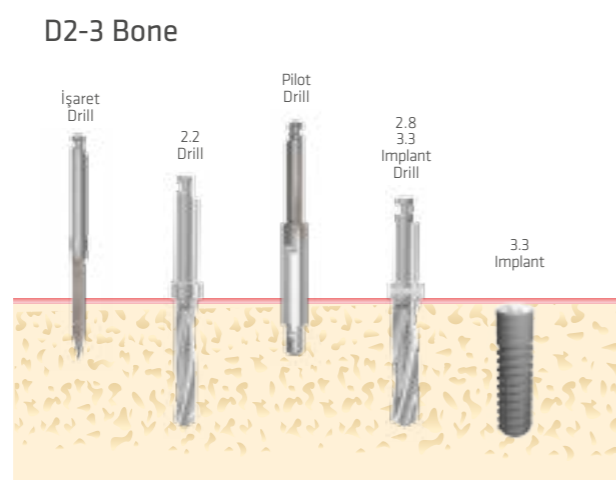
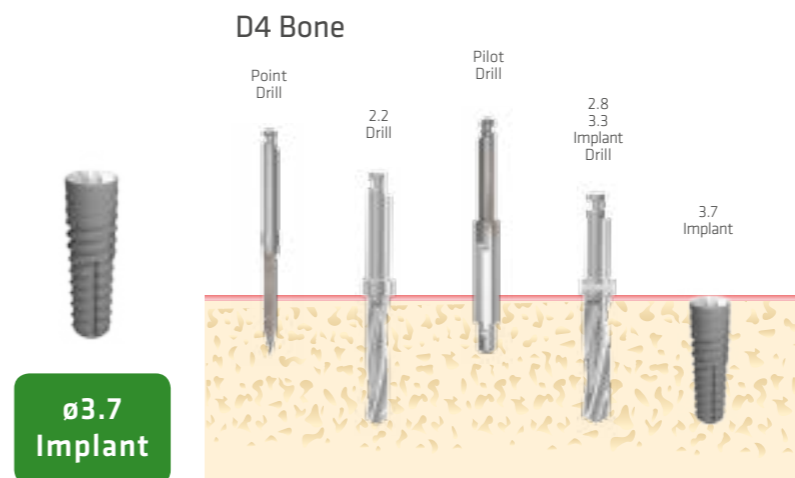
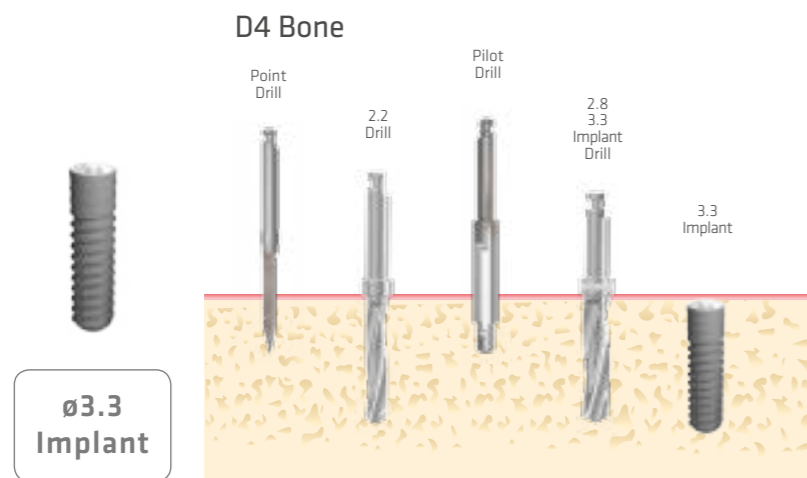


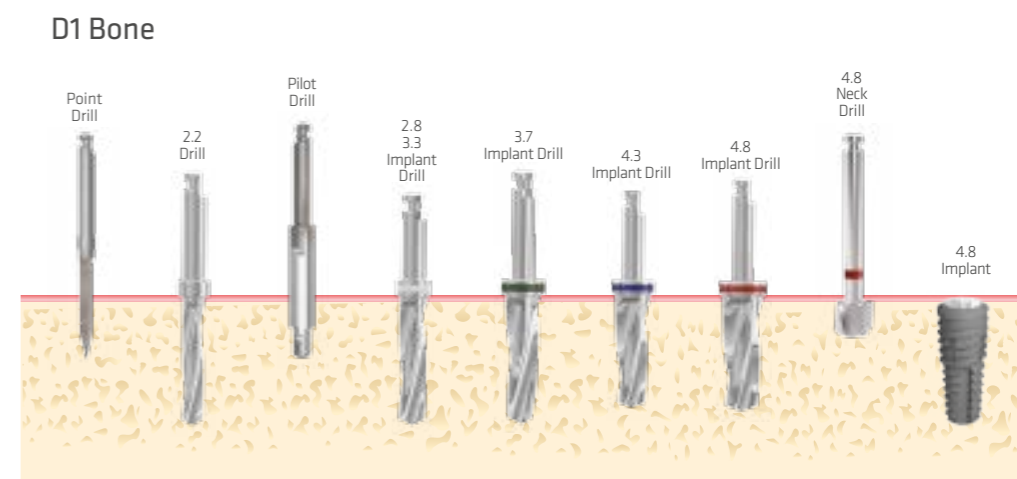
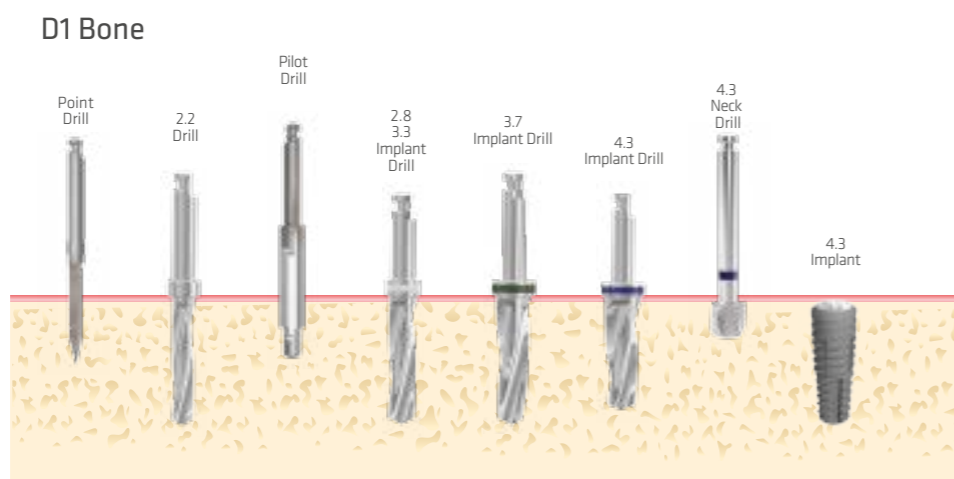
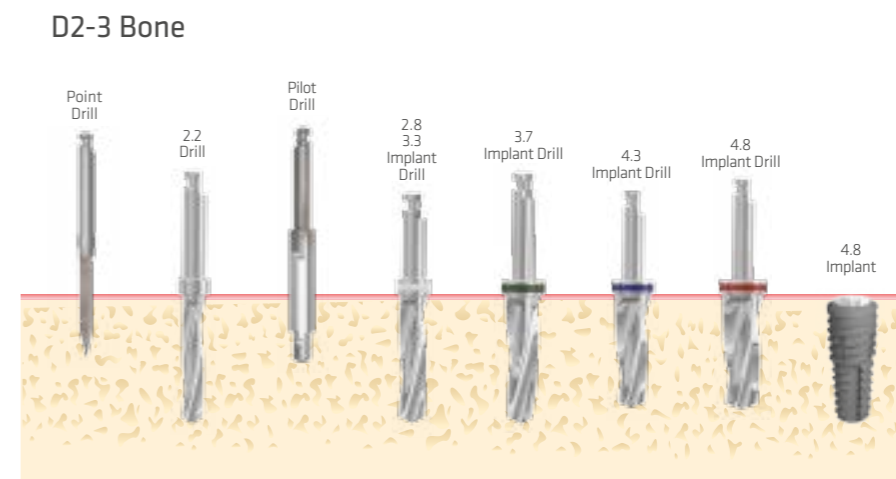
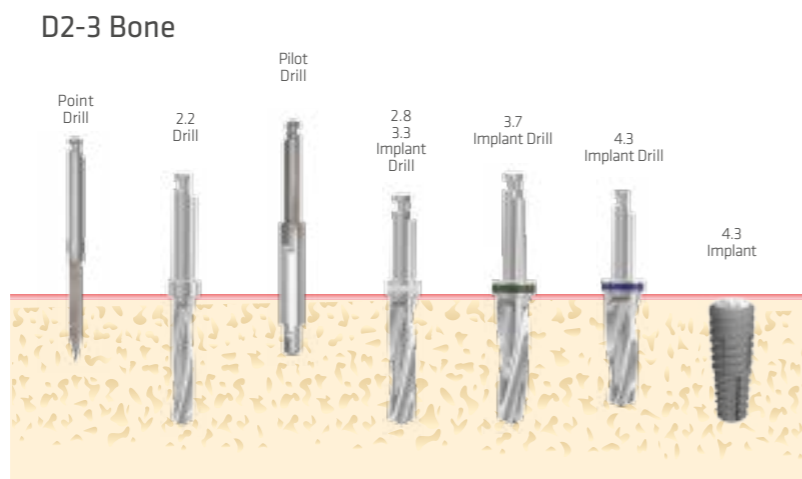
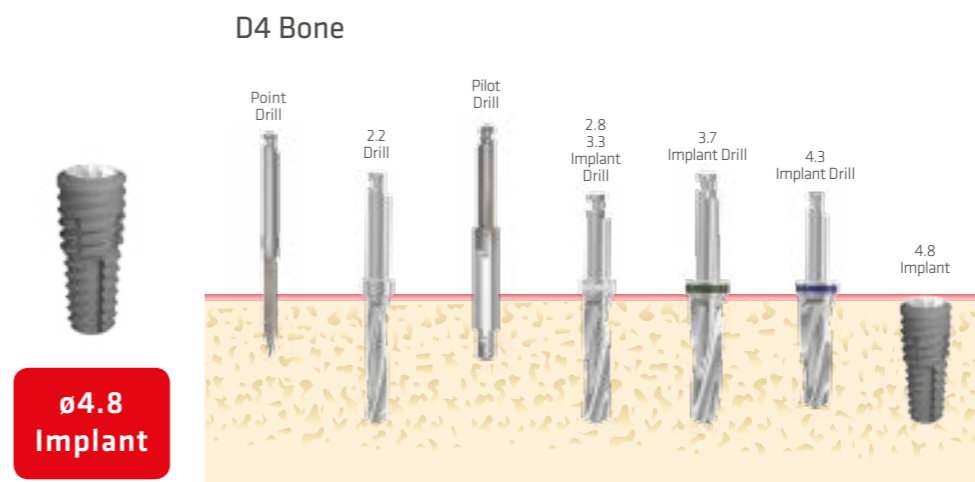
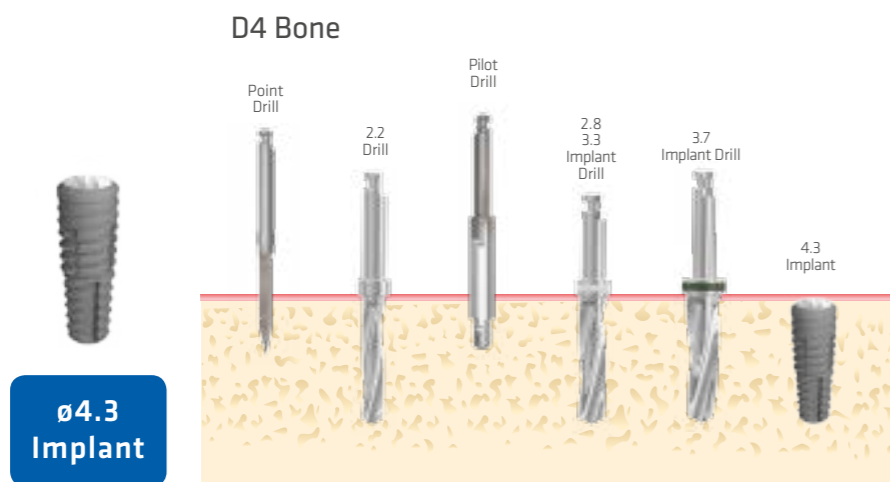
Ratchet



Implant Drill Table

Bone / Tissue Level

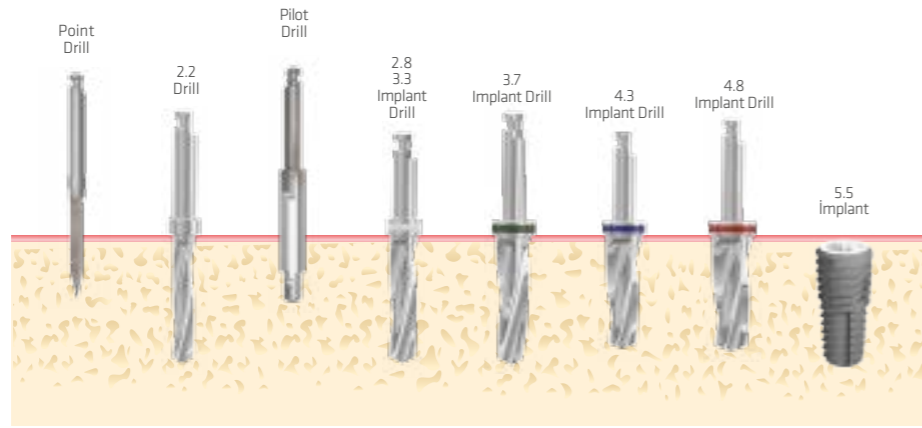




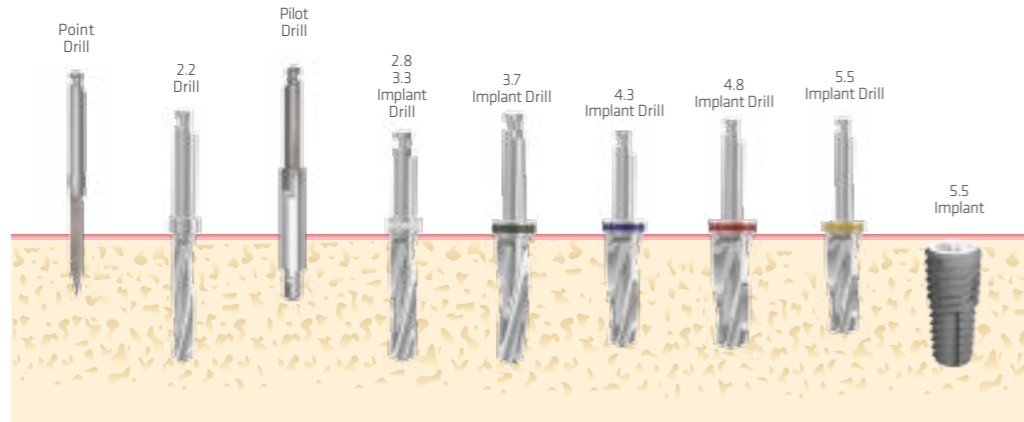
D4 Bone



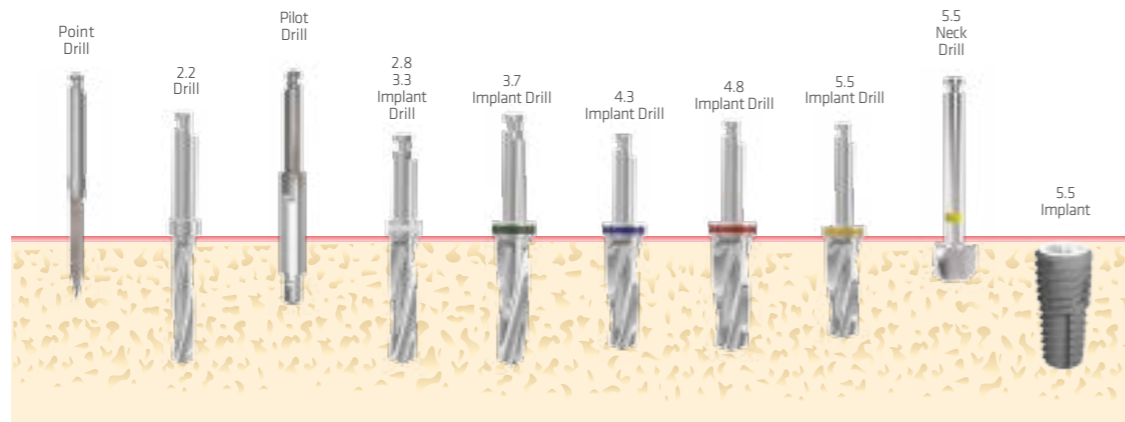
ø5.5
Implant



D2-3 Bone



D1 Bone



SURGICAL PROTOCOL | AGGRESSOR

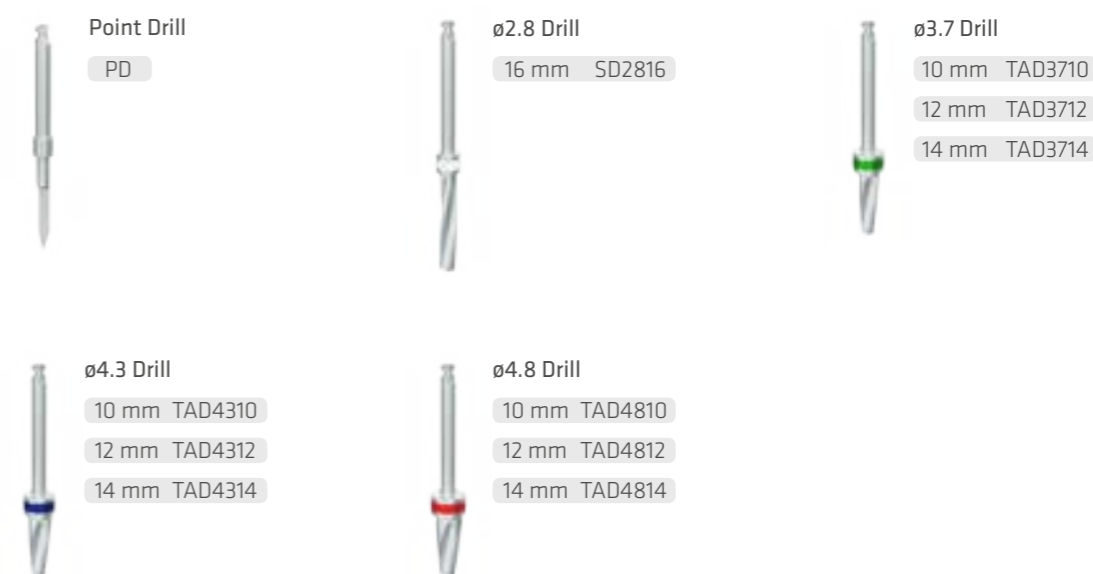


Self-Stopper Drills

Self-stopper drills provide great convenience to the users and can strike out the possibility of committing errors due to over drilling.

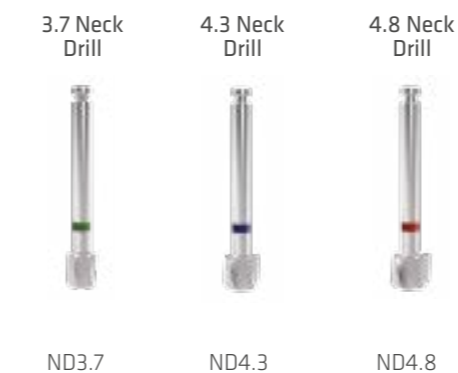
Aggressor implant drills operate at 200-300 rpm, thus preventing necrosis of bone caused by excessive heat during drilling. Autogenous bone graft can be collected due to low speed drilling and used for correcting the defect for the same patient.

High primary stability can be achieved with the conical drills designed as per the conical structure of the Impliance Aggressor implants.



Auxiliary Drills

The ideal platform can be created for the abutments by scraping the excess bone at the neck of the implant with the use of Bone Reamer available in three diameters.



DRIVERS

Ratchet Driver
Bone Level



Short
BFDRS

Ratchet Driver
Bone Level



Long
BFDRL

Hand-piece Driver
Bone Level



Short
BFDMS

Hand-piece Driver
Bone Level



Long
BFDML

1.2 Hex
Driver



Short
1.2HDRS

1.2 Hex
Driver



Long
1.2HDRL

Parallel Pin



Angled Pin 17°



Angled Pin 35°



Ratchet



BONE REAMER

Guided Pin
Bone Level



BASGpin

Reamer \varnothing 4.5
Bone Level



Reamer 4.5

Reamer \varnothing 5.5
Bone Level



Reamer 5.5

Reamer \varnothing 6.5
Bone Level



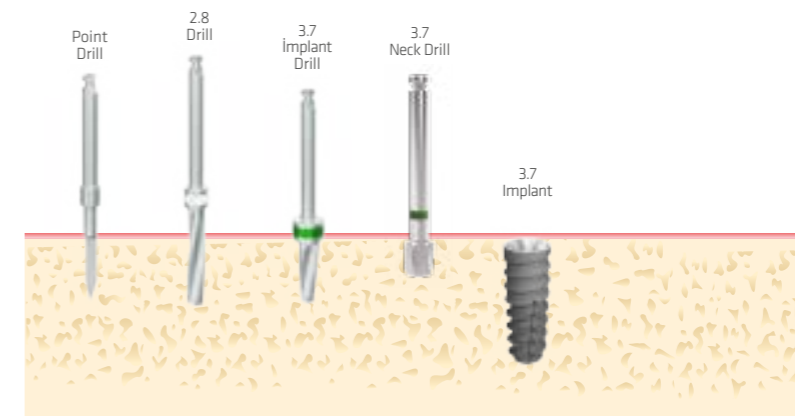
Reamer 6.5

Implant Drill Table

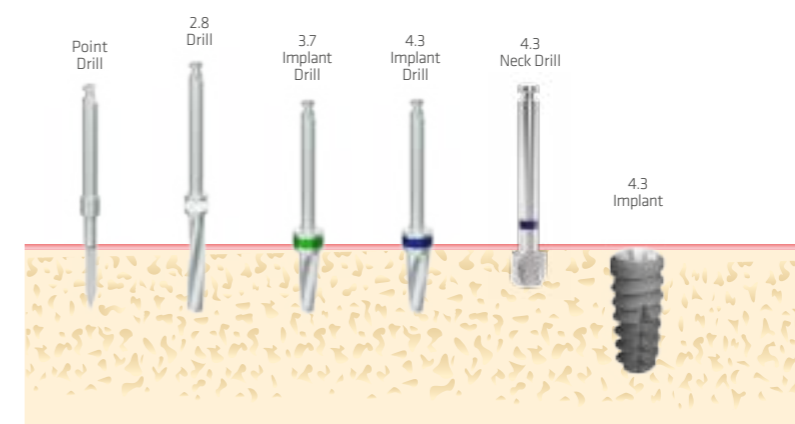
AGGRESSOR



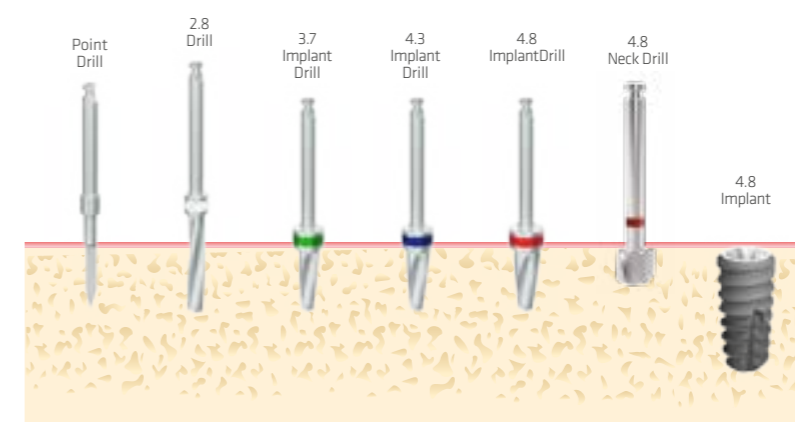
\varnothing 3.7
Implant



\varnothing 4.3
Implant



\varnothing 4.8
Implant



Short implant

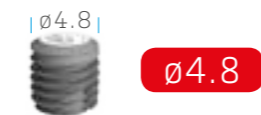
In cases where the bone height in the lower and upper jaw is insufficient and where either the sinus and the mandibular nerve do not allow to place conventional endosseous implants, short implants can be an alternative solution without resorting to advanced surgical techniques.



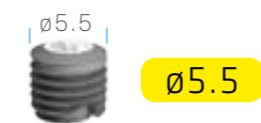
Bone Level



Length (mm)	Code
5.0	BMFSR4305
6.0	BMFSR4306



Length (mm)	Code
5.0	BMFSR4805
6.0	BMFSR4806

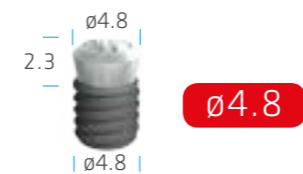


Length (mm)	Code
5.0	BMFSR5505
6.0	BMFSR5506

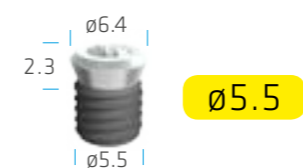
Tissue Level



Length (mm)	Code
4.0	TFSR4304
5.0	TFSR4305
6.0	TFSR4306



Length (mm)	Code
4.0	TFSR4804
5.0	TFSR4805
6.0	TFSR4806

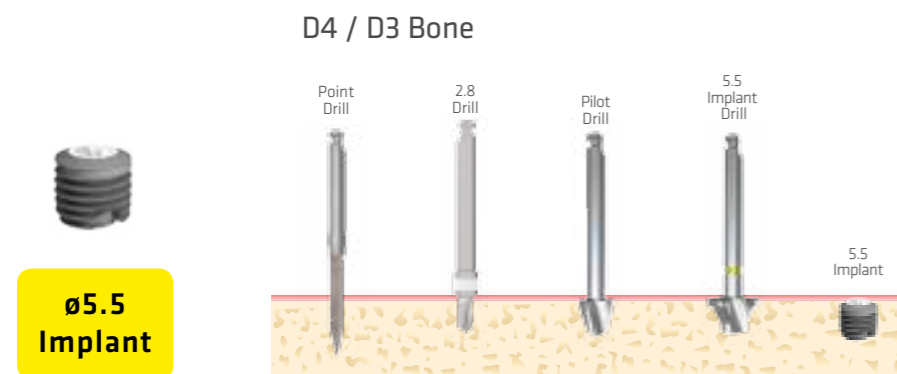
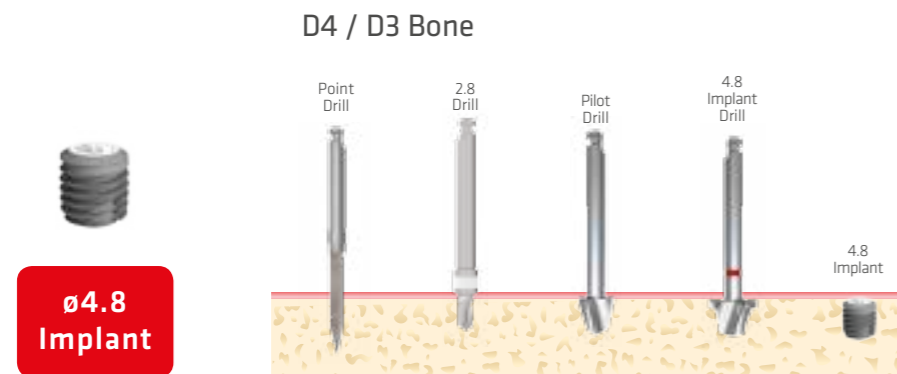
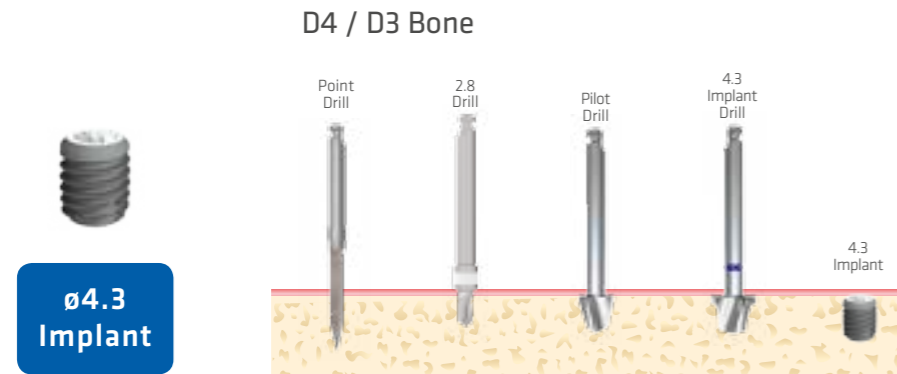


Length (mm)	Code
4.0	TWFSR5504
5.0	TWFSR5505
6.0	TWFSR5506

Implant Drill Table

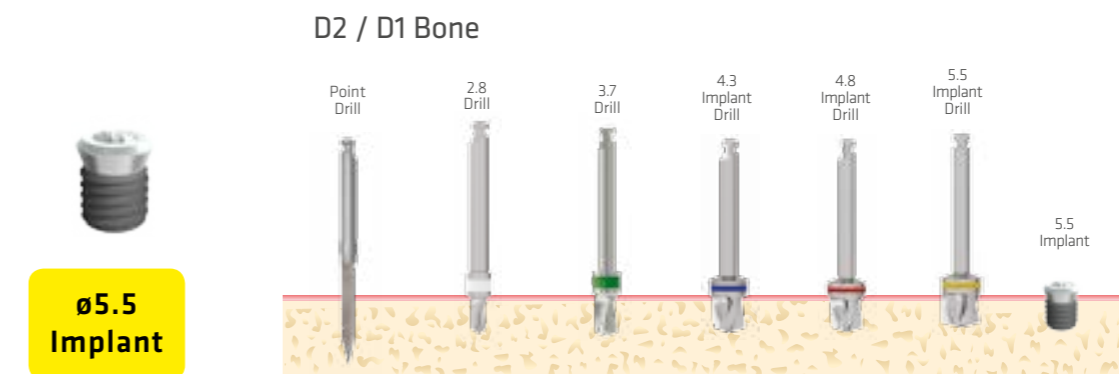
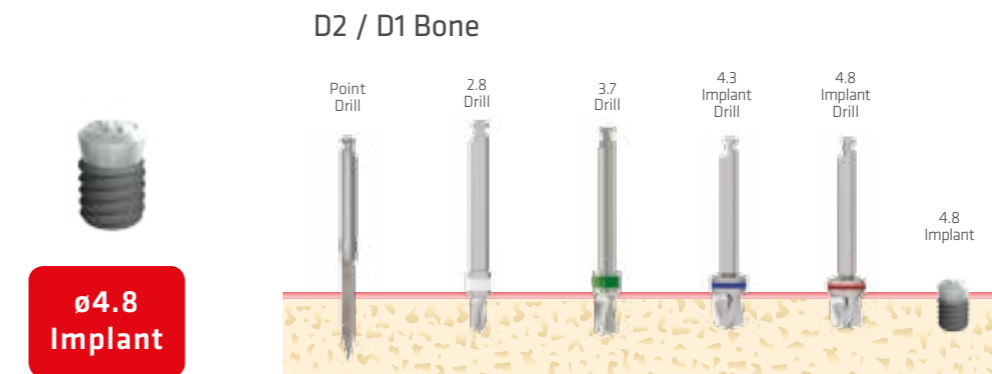
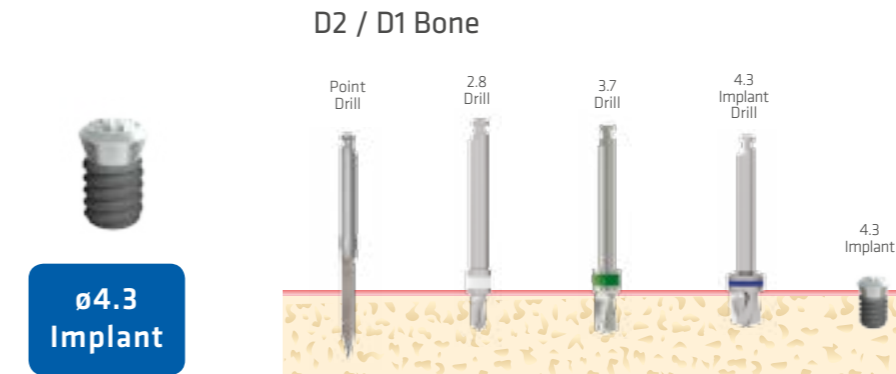
Short implant

Bone Level



Bone Level short implants are recommended for use in D3/D4 bone.

Tissue Level



Tissue Level short implants are recommended for use in D1/D2 bone.

SURGICAL PROTOCOL

One surgical kit for both bone and tissue level short implants.



Self-Stopper Drills

Bone Level



Tissue Level



Auxiliary Drills

Point Drill Pilot Drill



PD PLDS

Ratchet Driver

Ratchet Driver
Bone Level



Short / Long

BMFDRS / BMFDRL

Ratchet Driver
Tissue Level



Short / Long

TFDRS / TFDRL

Machine Driver

Machine Driver
Bone Level



Short / Long

BMFDMS / BMFDML

Machine Driver
Tissue Level



Short / Long

TFDMS / TFDML

1.2 Hex Driver



Short / Long

1.2HDRS / 1.2HDRL



Zygoma implant



Zygoma implants are special implants for patients with severe bone loss in the maxilla.

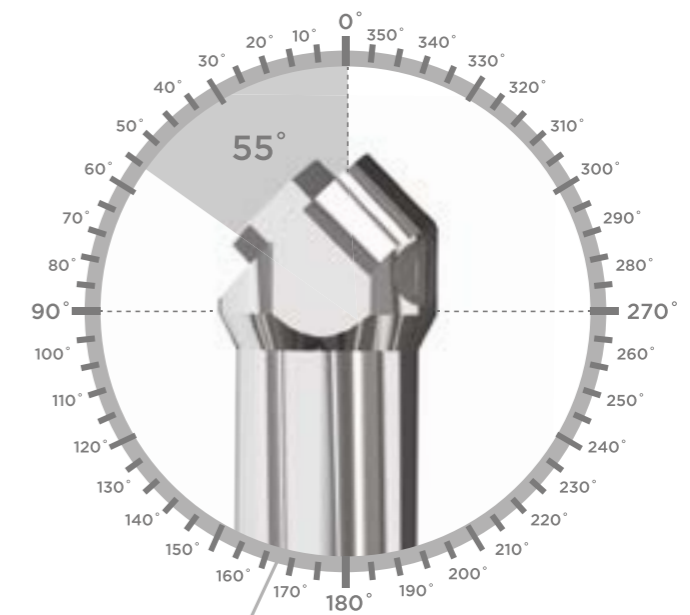
Zygoma implant

ZYGOMA IMPLANTS are special implants inserted in the zygomatic bone for patients with severe bone loss in the upper jaw. It is an alternative method used instead of laborious and difficult bone grafting treatment options, especially in patients who have partial or complete resection of the maxilla due to accidents or cancer.

Surgical and prosthetic rehabilitation can be very difficult in patients with highly resorbed edentulous maxilla. As a result of a variety of systemic and local factors such as early tooth loss, periodontal diseases, tumor resection, advanced horizontal and vertical bone resorption may occur in the upper jaw. Zygoma implant

can be a very fast and reliable solution in cases where traditional implant treatment cannot be performed because there is not enough maxillary bone.

This can be life changing for patients who have undergone extensive resections of maxilla due to reasons such as accident or cancer.



Like other implants, Zygomatic implants are made of Titanium and its alloys, they have a length of between 25-60 mm and a neck that is inclined by 55° to make it more prosthetic friendly.



Implance Zygoma Implant offers **3 different** product options according to different operational features.



ZYGOMA IMPLANT

Zygoma implants are special implants applied to the cheekbone in the zygoma region for patients with severe bone loss in the upper jaw and cannot be treated with conventional approach.



ONCOLOGICAL ZYGOMA IMPLANT

These are alternative dental implants used instead of laborious and difficult bone grafting treatment methods, especially in patients who have partial or complete removal of the upper jawbone due to accidents and tumors.



ATROPHIC MAXILLARY ZYGOMA IMPLANT

Zygoma Atrophic Maxillary implants are special implants applied to the cheekbone in the zygoma area in patients with extremely resorbed maxillary bone and cannot be treated conventionally.

ZYGOMA IMPLANT



ø4.3

Length (mm)	Code
35	ZYG35
37.5	ZYG37.5
40	ZYG40
42.5	ZYG42.5
45	ZYG45
47.5	ZYG47.5
50	ZYG50
52.5	ZYG52.5
55	ZYG55
57.5	ZYG57.5
60	ZYG60

ONCOLOGICAL ZYGOMA IMPLANT



ø4.3

Length (mm)	Code
25	ZONC25
27.5	ZONC27.5
30	ZONC30
32.5	ZONC32.5

ATROPHIC MAXILLARY ZYGOMA IMPLANT

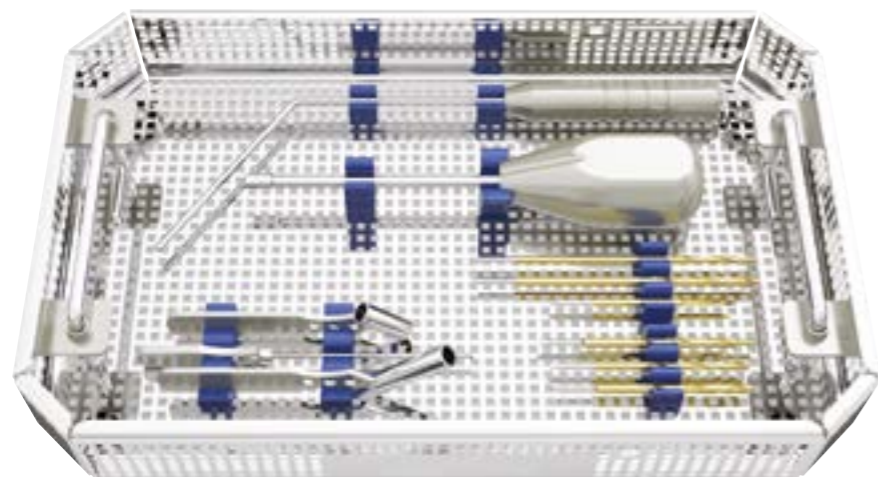


ø4.3

Length (mm)	Code
35	ZAM35
37.5	ZAM37.5
40	ZAM40
42.5	ZAM42.5
45	ZAM45
47.5	ZAM47.5
50	ZAM50
52.5	ZAM52.5
55	ZAM55
57.5	ZAM57.5
60	ZAM60

SURGICAL PROTOCOL

Surgical set for the insertion of zygomatic implants.



Surgical Equipment

Zygoma Drill Holder



ZDG

Zygoma Drill Holder Short



ZDGS

Zygoma Depth Gauge Angled



ZDIA

Zygoma Depth Gauge Straight



ZDIS

Surgical Drills

Point Drill



PD2970

Pilot Drill 3.5



PLD3565

Pilot Drill Long



PLD35100

Twist Drill 2,9 Short



TWD2965

Twist Drill 2,9 Long



TWD29100

Twist Drill 3,5 Short



TWD3565

Twist Drill 3,5 Long



TWD35100

PROSTHESIS

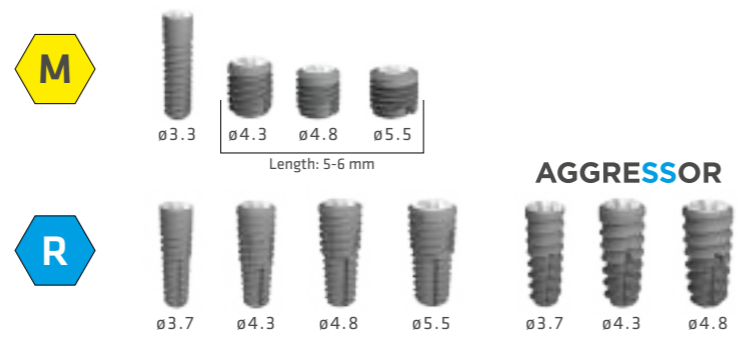


IMPLANCE
Dental Implant System

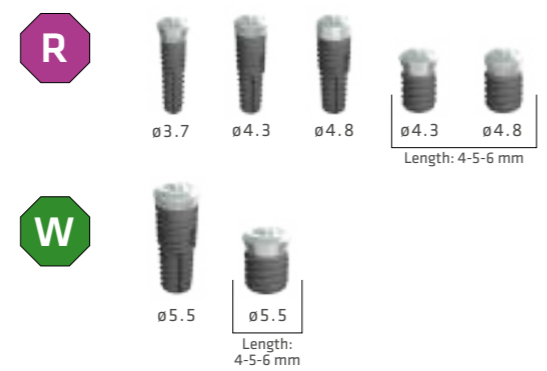
Perfect Harmony

ABUTMENT CONNECTION TYPES

Bone Level



Tissue Level



Zygoma



HEALING ABUTMENTS

It is necessary to use the healing abutment with appropriate height and diameter corresponding with the abutment type to be used depending on the gingival height and crown diameter to be replaced. If an abutment having smaller gingival height than the healing abutment is to be used, problems may occur during restoration since gingival opening will be smaller than the neck of abutment.

Bone Level



HEALING ABUTMENTS

		GH				
Diameter		2.5 mm	3.5 mm	5 mm	7 mm	
M	ø3.7	BMHA3725	BMHA3735	BMHA3750	BMHA3770	
R		1 mm	2 mm	3 mm	4 mm	5 mm
	ø4.5	BHA4510	BHA4520	BHA4530	BHA4540	BHA4550
	ø5.5	BHA5510	BHA5520	BHA5530	BHA5540	BHA5550
	ø6.5	BHA6510	BHA6520	BHA6530	BHA6540	BHA6550

Tissue Level



HEALING ABUTMENTS

		GH	
Diameter		3.5 mm	5.5 mm
R	ø3.7	THA35	THA55
W	ø6.4	THAW35	THAW55

Short implant



HEALING ABUTMENTS

		GH	
Diameter		2 mm	3 mm
M	ø5.0	BMHA5020	BMHA5030
	ø6.0	BMHA6020	BMHA6030
	ø8.0	BMHA8020	BMHA8030

Zygoma implant



HEALING CAP

		GH	
		3 mm	5 mm
Z		ZHA4330	ZHA4350

Octa System



OCTA ABUTMENT HEALING CAP

OAHCap
OAHCapL

Multi-Unit System



MULTI UNIT ABUTMENT HEALING CAP

BMUAHCap

TEMPORARY ABUTMENTS

Temporary abutments can be used immediately after surgery, particularly in the aesthetic zone to customize the temporary prosthesis.

Bone Level



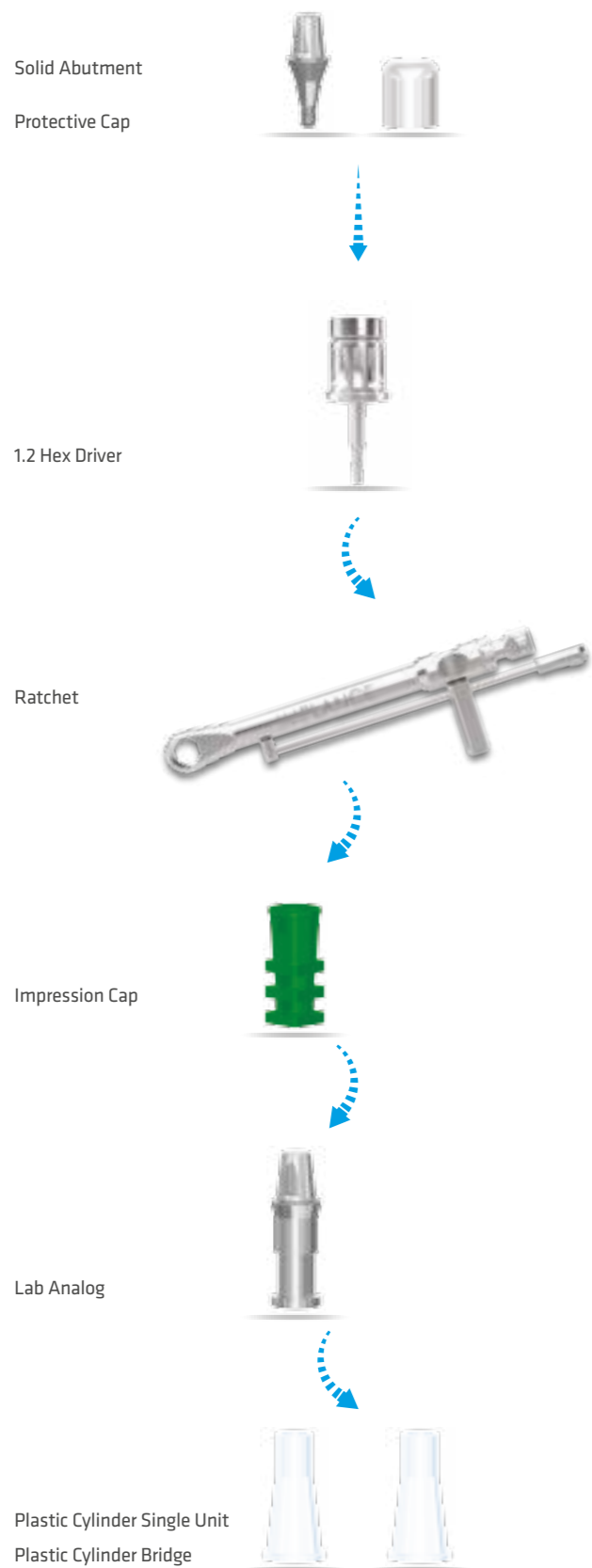
		Diameter
M	ø3.7	BMTA37
R	ø4.5	BTA45
	ø5.5	BTA55



Single Crown
and Bridge
Restorations

SOLID SYSTEM

Bone Level



SOLID ABUTMENTS

Diameter	GH				
	1 mm	2 mm	3 mm	4 mm	5 mm
M ø3.7	BMSA3710	BMSA3720	BMSA3730	BMSA3740	BMSA3750
R ø4.5 ø5.5	BSA4510	BSA4520	BSA4530	BSA4540	BSA4550
	BSA5510	BSA5520	BSA5530	BSA5540	BSA5550



SOLID PLASTIC CYLINDER

Diameter	BRIDGE	SINGLE
	M ø3.7	BMSAPIC37b
R ø4.5 ø5.5	BSAPIC45b	BSAPIC45c
	BSAPIC55b	BSAPIC55c



SOLID LAB ANALOG

Diameter	CODE
M ø3.7	BMSALA37
R ø4.5 ø5.5	BSALA45
	BSALA55



SOLID ABUTMENT CAP

Diameter	CODE
M ø3.7	BMSACap37
R ø5.1 ø5.8	BSACap45
	BSACap55



SOLID ABUTMENT IMPRESSION CAP

Diameter	CODE
M ø3.7	BMSAICap37
R ø4.5 ø5.5	BSAICap45
	BSAICap55

COUPLE SYSTEM

Bone Level

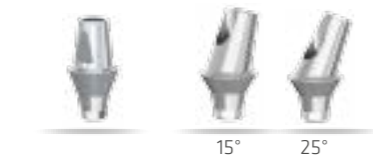
Impression Coping
Pick Up/ Transfer



Lab Analog



Couple Abutment



1.2 Hex Driver



Ratchet



COUPLE ABUTMENTS

		GH				
Diameter		1 mm	2 mm	3 mm	4 mm	5 mm
M	ø3.7	BMCA37107	BMCA37207	BMCA37307	BMCA37407	BMCA37507
	ø4.5	BCA45107	BCA45207	BCA45307	BCA45407	BCA45507
R	ø5.5	BCA55107	BCA55207	BCA55307	BCA55407	BCA55507
	ø6.5	BCA65107	BCA65207	BCA65307	BCA65407	BCA65507
Z	ø4.3			ZCA43307		ZCA43507



ANGLED ABUTMENTS

		GH				
Diameter		1 mm (15°)	2 mm (15°)	4 mm (15°)		
M	ø3.7	BMAA37151	BMAA37152	BMAA37154		
	ø4.5					
R	ø4.5	BAA45152	BAA45252		BAA45154	BAA45254
	ø5.5	BAA55152	BAA55252		BAA55154	BAA55254
	ø6.5	BAA65152	BAA65252		BAA65154	BAA65254
Z	ø4.3			ZAA43203		ZAA43205



IMPRESSION COPING PICK UP

Diameter		SHORT	LONG
M	ø3.7	BMICP37S	BMICP37L
R	ø4.5	BICP45S	BICP45L



IMPRESSION COPING TRANSFER

Diameter		SHORT	LONG
M	ø3.7	BMICT37S	BMICT37L
R	ø4.5	BIP45	



IMPLANT LAB ANALOG

M	BMFLA
R	BFLA

SHORT IMPLANT COUPLE SYSTEM

Bone Level

Impression Coping
Pick Up/Transfer



Lab Analog



Short Implant Couple Abutment



1.2 Hex Driver



Ratchet



SHORT IMPLANT COUPLE ABUTMENTS

Diameter	GH	
	2 mm	3 mm
ø5.0	BMCA5020	BMCA5030
ø6.0	BMCA6020	BMCA6030
ø8.0	BMCA8020	BMCA8030



SHORT IMPLANT IMPRESSION COPING PICK UP

Diameter	CODE
ø5.0	BMSICP50
ø6.0	BMSICP60



SHORT IMPLANT IMPRESSION COPING TRANSFER

Diameter	CODE
ø5.0	BMSICT50
ø6.0	BMSICT60



IMPLANT LAB ANALOG

ø5.0	BMFLA
------	-------

OCTA SYSTEM

Bone Level



OCTA ABUTMENTS

	GH				
	1 mm	2 mm	3 mm	4 mm	5 mm
M	BMOA10	BMOA20	BMOA30	BMOA40	BMOA50
R	BOA10	BOA20	BOA30	BOA40	BOA50



OCTA ABUTMENT PLASTIC CYLINDER

	OCTA	NON-OCTA
	OAPICy	OAPICyN



OCTA ABUTMENT TITANIUM CYLINDER

	OCTA	NON-OCTA
	OATICy	OATICyN



OCTA SYSTEM IMPRESSION COPING PICK UP

	OCTA	NON-OCTA
	ICOAP	ICOAPN



OCTA SYSTEM IMPRESSION COPING TRANSFER

	OCTA	NON-OCTA
	ICOAT	ICOATN



OCTA ABUTMENT HEALING CAP

	CODE
	OAHCap

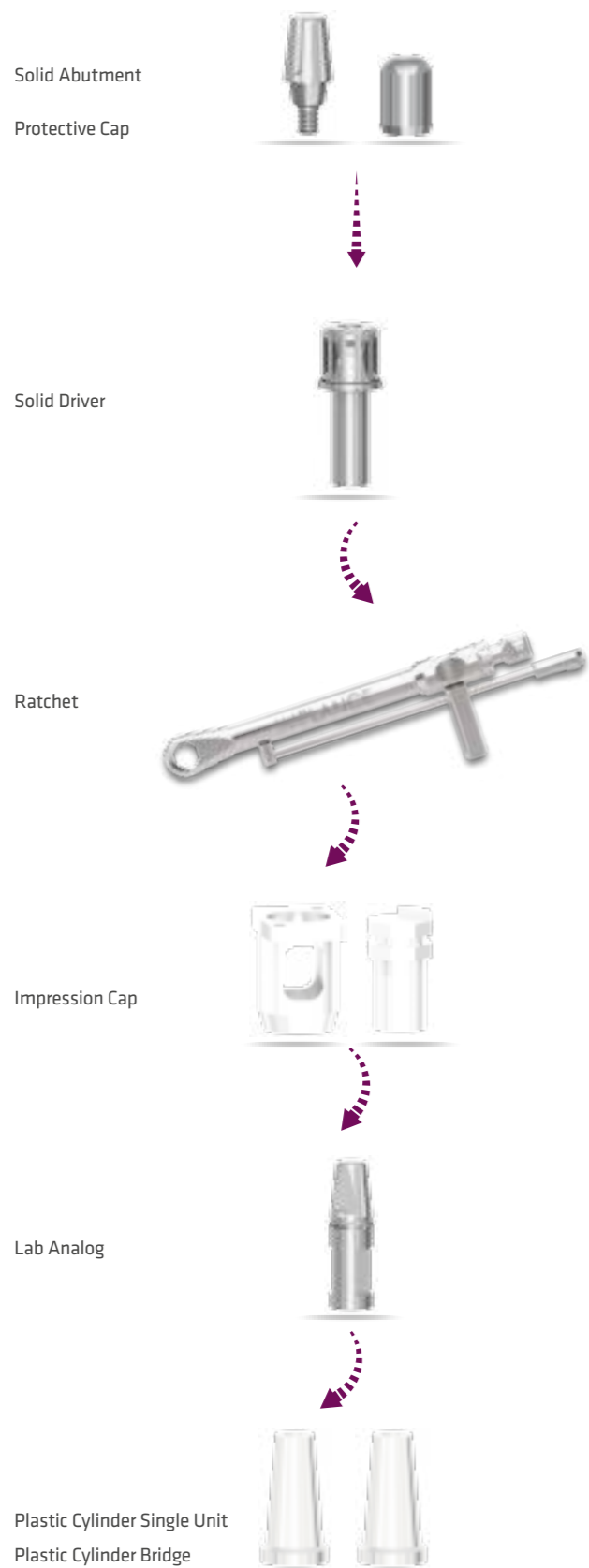


OCTA ABUTMENT LAB ANALOG

	CODE
	OALA

SOLID SYSTEM

Tissue Level



SOLID ABUTMENTS

	GH		
Diameter	4 mm	5.5 mm	7 mm
R ø3.5	TSA40	TSA55	TSA70
W ø4.3	TSAL40	TSAL55	TSAL70



SOLID PLASTIC CYLINDER

Diameter	BRIDGE	SINGLE
ø5.3	TSAPICb	TSAPICc



SOLID LAB ANALOG

	GH		
Diameter	4 mm	5.5 mm	7 mm
R ø4.8	TSALA40	TSALA55	TSALA70
W ø6.0	TSALLA40	TSALLA55	TSALLA70



SOLID ABUTMENT PROTECTIVE CAP

	GH		
Diameter	4 mm	5.5 mm	7 mm
ø5.5	TSACap40	TSACap55	TSACap70



SOLID ABUTMENT IMPRESSION CAP

CODE
TSAlCap



SOLID ABUTMENT POSITION CYLINDER

CODE
TSAPoCy

COUPLE SYSTEM

Tissue Level

Impression Coping
Pick Up/Transfer

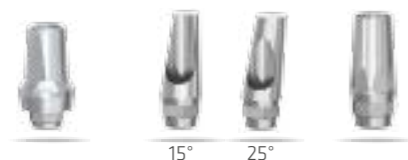


Lab Analog



Abutment

Couple
Angled
Synocta



1.2 Hex Driver



Ratchet



COUPLE ABUTMENTS

		GH			
Diameter		1 mm	2 mm	3 mm	4 mm
R	ø5.2	TCA10	TCA20	TCA30	TCA40
W	ø6.4	TCAW10	TCAW20	TCAW30	TCAW40



ANGLED ABUTMENT

		15°	25°
R	ø3.7	TAA15	TAA25



SYNOCTA ABUTMENT

		GH
Diameter		6 mm
R	ø3.5	TSOA



IMPRESSION COPING PICK UP

		CODE
R	ø5.5	TICP
W	ø6.4	TICPW



IMPRESSION COPING TRANSFER

		CODE
R	ø5.5	TICT

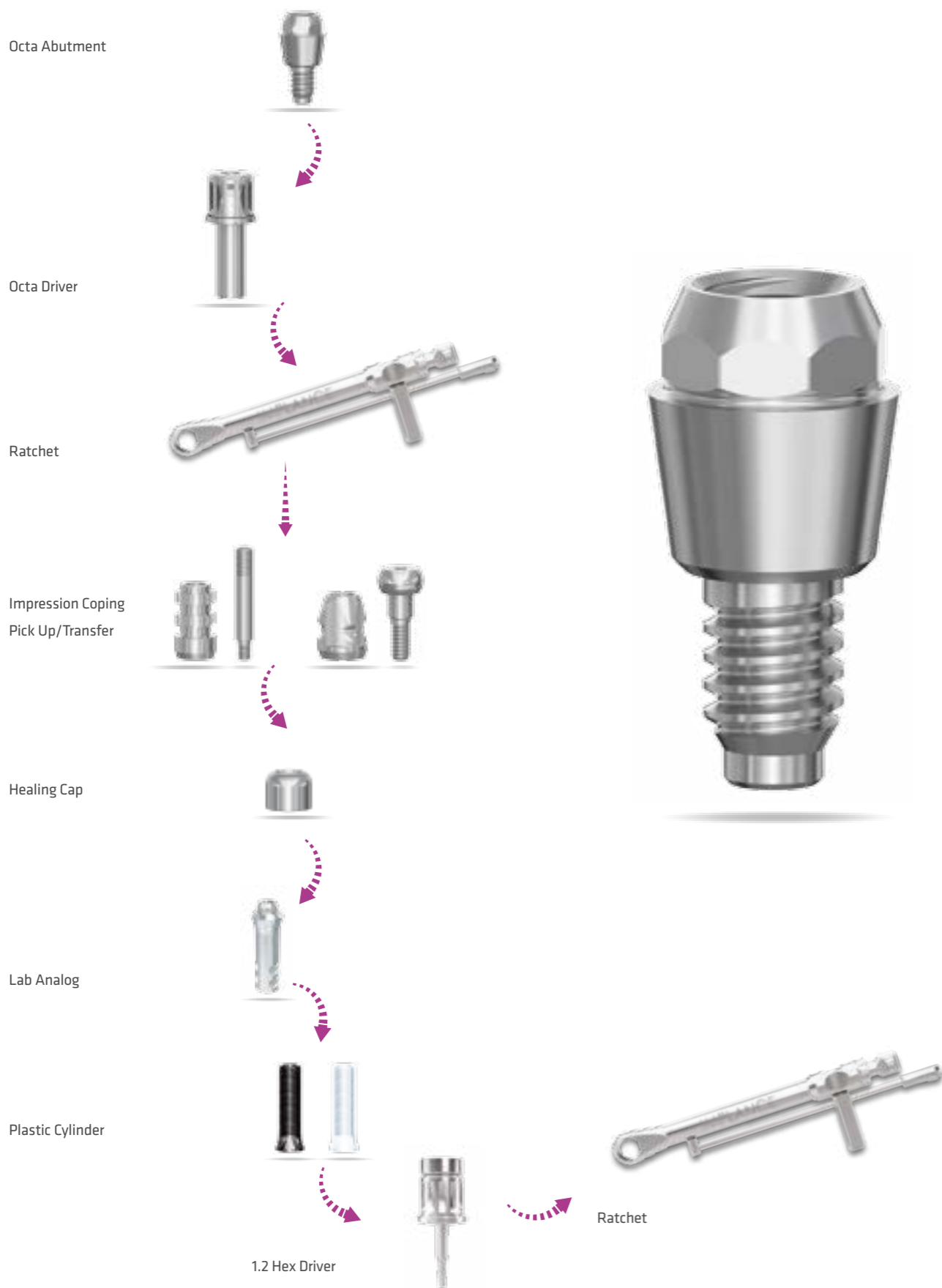


IMPLANT LAB ANALOG

		CODE
R	ø4.8	TFLA
W	ø6.0	TFLLA

OCTA SYSTEM

Tissue Level



OCTA ABUTMENTS

Diameter	CODE
ø3.5	TOA



OCTA ABUTMENT PLASTIC CYLINDER

OCTA	NON-OCTA
OAPICy	OAPICyN



OCTA ABUTMENT TITANIUM CYLINDER

OCTA	NON-OCTA
OATICy	OATICyN



OCTA SYSTEM IMPRESSION COPING PICK UP

OCTA	NON-OCTA
ICOAP	ICOAPN



OCTA SYSTEM IMPRESSION COPING TRANSFER

OCTA	NON-OCTA
ICOAT	ICOATN



OCTA ABUTMENT LAB ANALOG

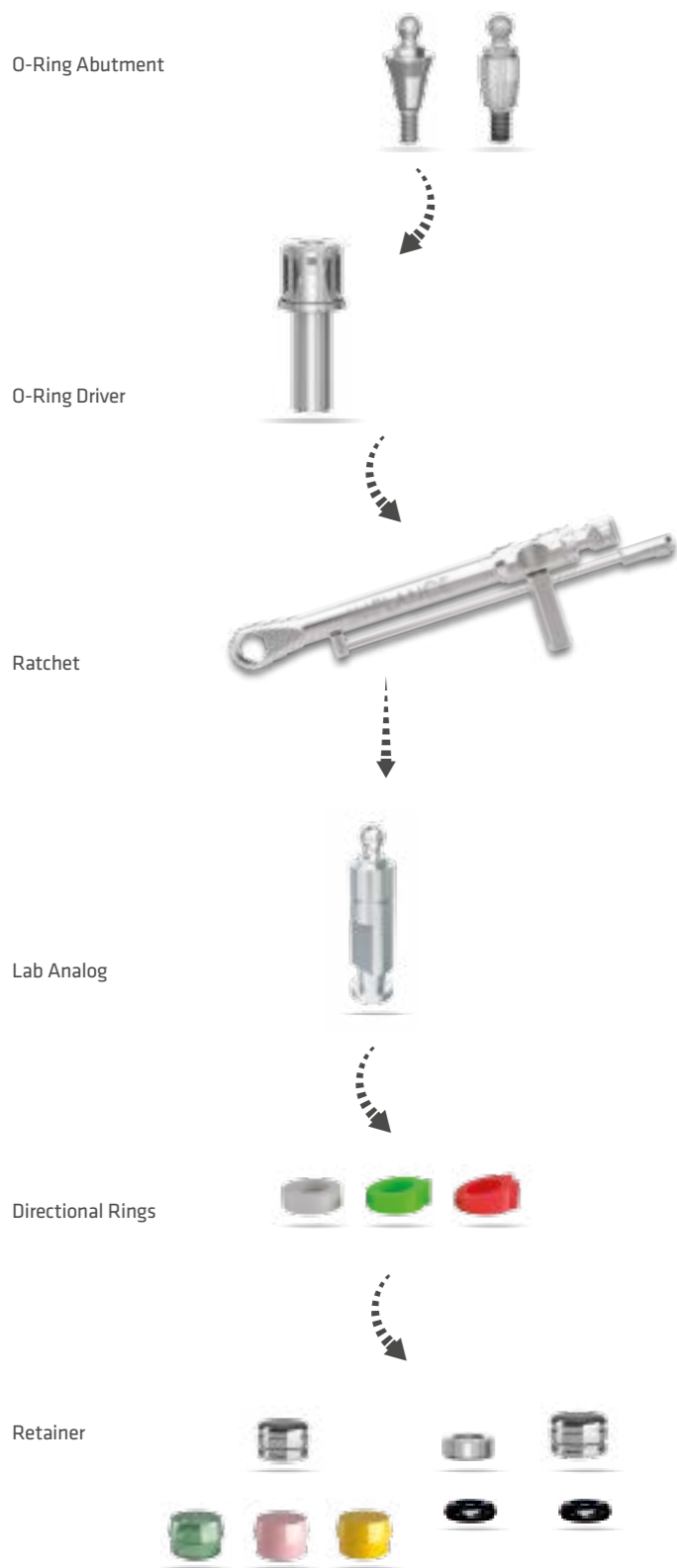
CODE
OALA



Removable Prosthesis

O-RING SYSTEM

Bone Level / Tissue Level



O-RING ABUTMENTS

	GH					
	0.5 mm	1 mm	2 mm	3 mm	4 mm	6 mm
M	BMORA05	-	BMORA20	-	BMORA40	-
R	BORA05	BORA10	BORA20	BORA30	BORA40	BORA60



O-RING ABUTMENTS

	GH		
	0.5 mm	2 mm	4 mm
R W	TORA05	TORA20	TORA40



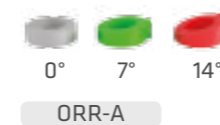
O-RING LAB ANALOG

ORLA

RETAINER



DIRECTIONAL RINGS



INSERTING DRIVER



LOCATOR SYSTEM

Bone Level / **Tissue** Level

Locator Abutment



Locator Abutment Driver



Ratchet



Locator Cap



Locator Lab Analog



Locator Retainer (LMHt)



- 
PURPLE
 Rigid
 • 2.7Kg
- 
TRANSPARENT
 Standart
 • 1.8Kg
- 
PINK
 Soft
 • 1.2Kg
- 
YELLOW
 Extra Soft
 • 0.6Kg



BONE LEVEL LOCATOR ABUTMENTS

	GH					
	1.5 mm	2.5 mm	3.5 mm	4.5 mm	5.5 mm	6.5 mm
M	BMLA15	BMLA25	BMLA35	BMLA45	BMLA55	BMLA65
R	BLA15	BLA25	BLA35	BLA45	BLA55	BLA65



TISSUE LEVEL LOCATOR ABUTMENTS







	GH					
	1.5 mm	2.5 mm	3.5 mm	4.5 mm	5.5 mm	6.5 mm
R	TLA15	TLA25	TLA35	TLA45	TLA55	TLA65



LOCATOR LAB ANALOG

- BLLA
- TLLA

LOCATOR RETAINER

-  TITANIUM CAP
-  BLACK CAP Processing
- LMHt
-  PURPLE CAP
2.7 Kg
-  TRANSPARENT CAP
1.8 Kg
-  PINK CAP
1.2 Kg
-  YELLOW CAP
0.6 Kg
- LRI

BAR SYSTEM

Bone Level / Tissue Level



BAR BURNOUT / IB



BAR POSITIONING / IBP



BAR HOUSING / IBH



BAR CLIP YELLOW / IBClip - y
Medium Retention 1.8 Kg



BAR CLIP PINK / IBClip - p
Soft Retention 1.2 Kg



BAR CLIP RED / IBClip - r
Extra Soft Retention 0.8 Kg



Bar Matrix Insert Adaptor



Parallelometer

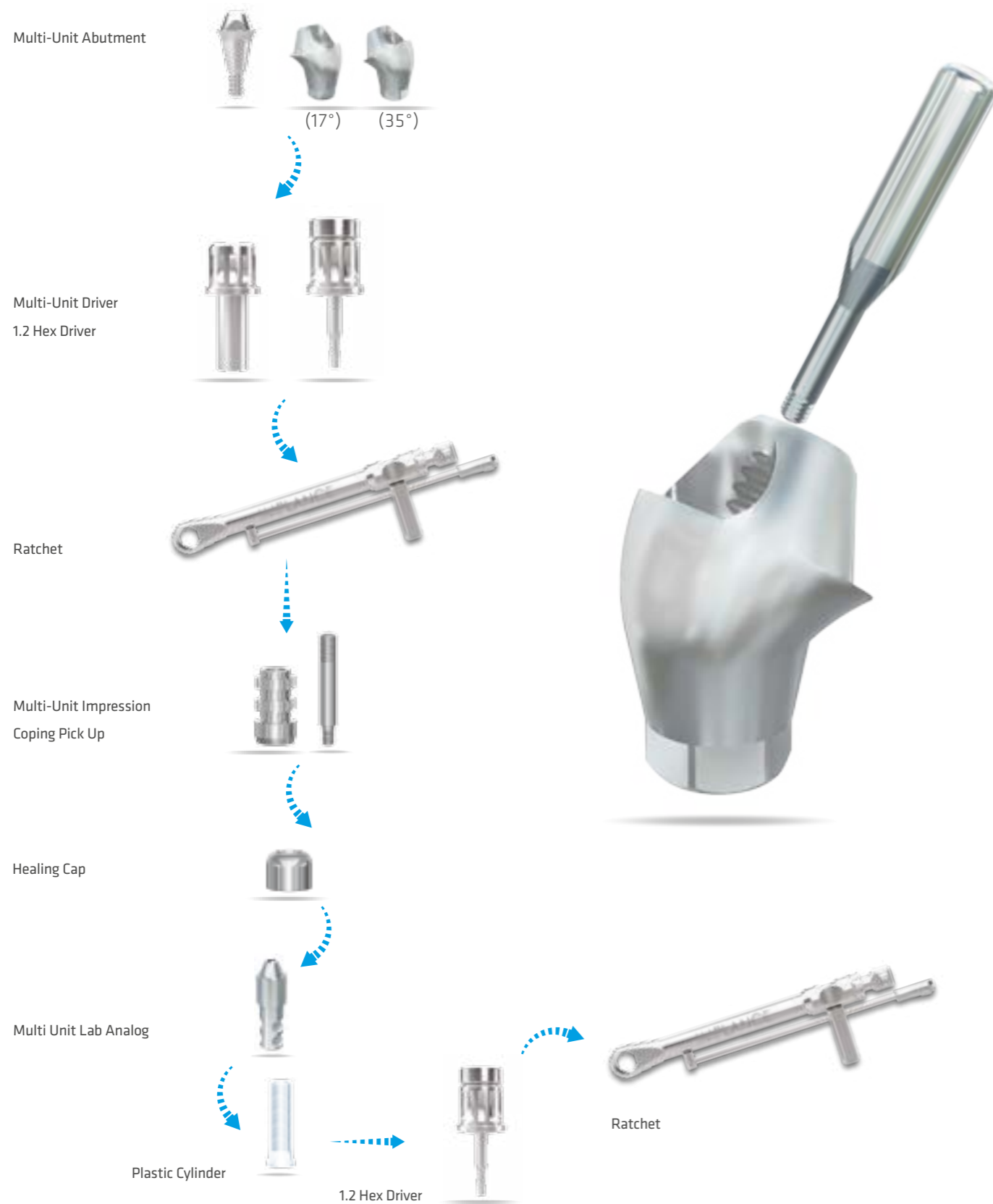




Hybrid
Restorations

MULTI-UNIT SYSTEM

Bone Level



MULTI-UNIT ABUTMENTS

	GH				
	0.5 mm	1.5 mm	2.5 mm	3.5 mm	4.5 mm
M	BMMUA4805	BMMUA4815	BMMUA4825	BMMUA4835	BMMUA4845
R	BMUA4805	BMUA4815	BMUA4825	BMUA4835	BMUA4845



ZYGOMA MULTI-UNIT ABUTMENTS

	GH				
	0.5 mm	1.0 mm	2.0 mm	3.0 mm	5.0 mm
Z	ZMUA431705	ZMUA43171	ZMUA43172	ZMUA43173	ZMUA43175



MULTI-UNIT ANGLED ABUTMENTS

	GH		
	1 mm	2.5 mm	3.5 mm
R	BMUA48171	BMUA48172	BMUA48173
	BMUA48351	BMUA48352	BMUA48353



MULTI-UNIT IMPRESSION COPING PICK UP

BMUAICP



ZYGOMA IMPRESSION COPING PICK UP

ZICP



MULTI-UNIT ABUTMENT PLASTIC CYLINDER

MUAPICYN



ZYGOMA PLASTIC CYLINDER

ZPICYN



MULTI-UNIT ABUTMENT TITANIUM CYLINDER

MUATICYN



MULTI-UNIT LAB ANALOG

BMUALA



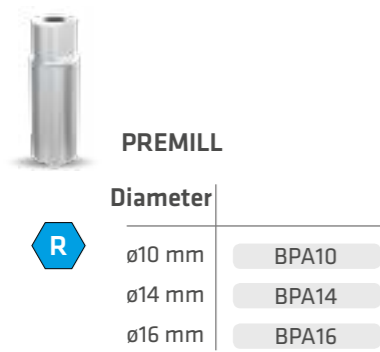
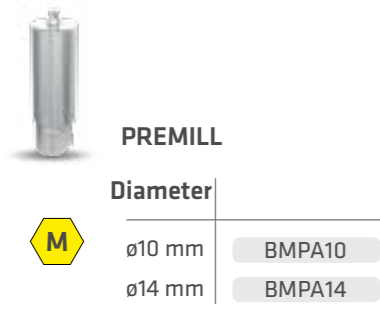
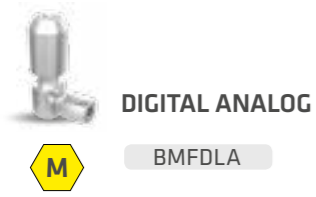
ZYGOMA LAB ANALOG

ZLA

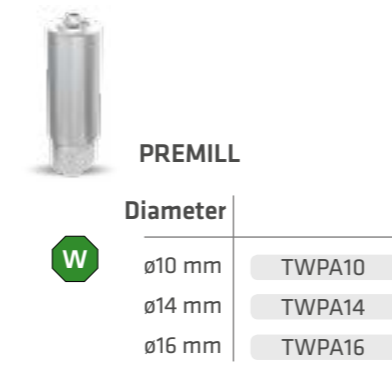
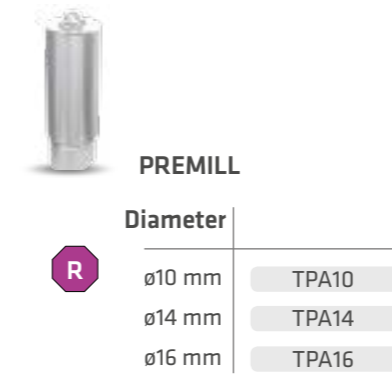


Digital
Dentistry

Bone Level



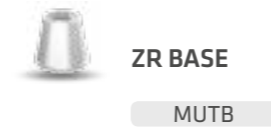
Tissue Level



Ti-Base Abutment



Multi Unit Abutment



Octa Abutment



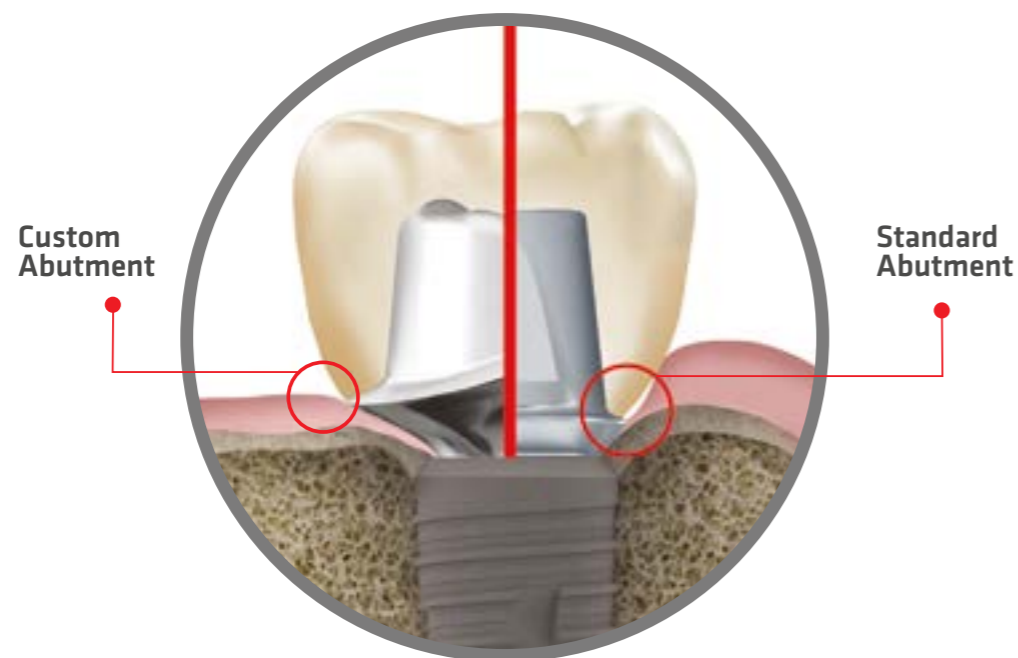
Premill Custom Abutment

Premill custom abutments are "patient-specific" solutions prepared according to the patient's teeth and gingiva size. Custom abutments are milled in industrial CNC machines. It is specially designed and produced for each case with CAD/CAM technology according to the angle, gingiva shape and structure of the implant.



Advantages

- Perfect match between Implant - Abutment and gingiva,
- Solutions to problems with angulation, location and anatomy,
- Ideal gingiva and Cole line,
- Wide range of materials,
- Price advantage,
- Aesthetic superiority.



Abutment Planning Kit

Abutment Planning Kit is an associative tool for the dentists to choose the appropriate types of abutments to use. The kit includes identical titanium models for different dimensions and lengths for straight and angled abutments.

These models help determine the most suitable abutment option for prosthesis planning, enabling users to construct a successful prosthetic solution.

Abutments are color coded for different types of implants:

Abutments for 3.3 mini implants are grey,

Abutments for Bone Level Implants are blue,

Abutments for Tissue Level Implants are lilac colored.



Effort



INDEX

PRODUCT NAME	MATERIAL	PRODUCT CODE
--------------	----------	--------------

Bone Level Mini Implant Cylindrical RBM

Bone Level Mini Implant Cylindrical RBM	Ti6AL4V ELI	BMFSR3308
Bone Level Mini Implant Cylindrical RBM	Ti6AL4V ELI	BMFSR3310
Bone Level Mini Implant Cylindrical RBM	Ti6AL4V ELI	BMFSR3312
Bone Level Mini Implant Cylindrical RBM	Ti6AL4V ELI	BMFSR3314

Bone Level Short Implant Cylindrical RBM

Bone Level Short Implant Cylindrical RBM	Ti-G4	BMFSR4305
Bone Level Short Implant Cylindrical RBM	Ti-G4	BMFSR4306
Bone Level Short Implant Cylindrical RBM	Ti-G4	BMFSR4805
Bone Level Short Implant Cylindrical RBM	Ti-G4	BMFSR4806
Bone Level Short Implant Cylindrical RBM	Ti-G4	BMFSR5505
Bone Level Short Implant Cylindrical RBM	Ti-G4	BMFSR5506

Bone Level Implant Hybrid

Bone Level Implant Hybrid	Ti6AL4V ELI	BFHR3708
Bone Level Implant Hybrid	Ti6AL4V ELI	BFHR3710
Bone Level Implant Hybrid	Ti6AL4V ELI	BFHR3712
Bone Level Implant Hybrid	Ti6AL4V ELI	BFHR3714
Bone Level Implant Hybrid	Ti-G4	BFHR4308
Bone Level Implant Hybrid	Ti-G4	BFHR4310
Bone Level Implant Hybrid	Ti-G4	BFHR4312
Bone Level Implant Hybrid	Ti-G4	BFHR4314
Bone Level Implant Hybrid	Ti-G4	BFHR4808
Bone Level Implant Hybrid	Ti-G4	BFHR4810
Bone Level Implant Hybrid	Ti-G4	BFHR4812
Bone Level Implant Hybrid	Ti-G4	BFHR4814

Bone Level Wide Implant Hybrid

Bone Level Wide Implant Hybrid	Ti-G4	BWFHR5508
Bone Level Wide Implant Hybrid	Ti-G4	BWFHR5510
Bone Level Wide Implant Hybrid	Ti-G4	BWFHR5512

Bone Level Aggressor Implant RBM

Bone Level Aggressor Implant RBM	Ti-G4	BFAR3710
Bone Level Aggressor Implant RBM	Ti-G4	BFAR3712
Bone Level Aggressor Implant RBM	Ti-G4	BFAR3714
Bone Level Aggressor Implant RBM	Ti-G4	BFAR4310
Bone Level Aggressor Implant RBM	Ti-G4	BFAR4312
Bone Level Aggressor Implant RBM	Ti-G4	BFAR4314
Bone Level Aggressor Implant RBM	Ti-G4	BFAR4810
Bone Level Aggressor Implant RBM	Ti-G4	BFAR4812
Bone Level Aggressor Implant RBM	Ti-G4	BFAR4814

Healing Abutment

Bone Level Mini Healing Abutment	Ti6AL4V ELI	BMHA3725
Bone Level Mini Healing Abutment	Ti6AL4V ELI	BMHA3735
Bone Level Mini Healing Abutment	Ti6AL4V ELI	BMHA3750
Bone Level Mini Healing Abutment	Ti6AL4V ELI	BMHA3770

Bone Level Healing Abutment	Ti6AL4V ELI	BHA4510
Bone Level Healing Abutment	Ti6AL4V ELI	BHA4520

PRODUCT NAME	MATERIAL	PRODUCT CODE
--------------	----------	--------------

Bone Level Healing Abutment	Ti6AL4V ELI	BHA4530
Bone Level Healing Abutment	Ti6AL4V ELI	BHA4540
Bone Level Healing Abutment	Ti6AL4V ELI	BHA4550
Bone Level Healing Abutment	Ti6AL4V ELI	BHA5510
Bone Level Healing Abutment	Ti6AL4V ELI	BHA5520
Bone Level Healing Abutment	Ti6AL4V ELI	BHA5530
Bone Level Healing Abutment	Ti6AL4V ELI	BHA5540
Bone Level Healing Abutment	Ti6AL4V ELI	BHA5550
Bone Level Healing Abutment	Ti6AL4V ELI	BHA6510
Bone Level Healing Abutment	Ti6AL4V ELI	BHA6520
Bone Level Healing Abutment	Ti6AL4V ELI	BHA6530
Bone Level Healing Abutment	Ti6AL4V ELI	BHA6540
Bone Level Healing Abutment	Ti6AL4V ELI	BHA6550

Bone Level Mini Healing Abutment For Short Implants	Ti6AL4V ELI	BMHA5020
Bone Level Mini Healing Abutment For Short Implants	Ti6AL4V ELI	BMHA5030
Bone Level Mini Healing Abutment For Short Implants	Ti6AL4V ELI	BMHA6020
Bone Level Mini Healing Abutment For Short Implants	Ti6AL4V ELI	BMHA6030
Bone Level Mini Healing Abutment For Short Implants	Ti6AL4V ELI	BMHA8020
Bone Level Mini Healing Abutment For Short Implants	Ti6AL4V ELI	BMHA8030

COUPLE SYSTEM**COUPLE Abutment**

Bone Level Mini Couple Abutment H7	Ti6AL4V ELI	BMCA37107
Bone Level Mini Couple Abutment H7	Ti6AL4V ELI	BMCA37207
Bone Level Mini Couple Abutment H7	Ti6AL4V ELI	BMCA37307
Bone Level Mini Couple Abutment H7	Ti6AL4V ELI	BMCA37407
Bone Level Mini Couple Abutment H7	Ti6AL4V ELI	BMCA37507

Bone Level Couple Abutment H7	Ti6AL4V ELI	BCA45107
Bone Level Couple Abutment H7	Ti6AL4V ELI	BCA45207
Bone Level Couple Abutment H7	Ti6AL4V ELI	BCA45307
Bone Level Couple Abutment H7	Ti6AL4V ELI	BCA45407
Bone Level Couple Abutment H7	Ti6AL4V ELI	BCA45507
Bone Level Couple Abutment H7	Ti6AL4V ELI	BCA55107
Bone Level Couple Abutment H7	Ti6AL4V ELI	BCA55207
Bone Level Couple Abutment H7	Ti6AL4V ELI	BCA55307
Bone Level Couple Abutment H7	Ti6AL4V ELI	BCA55407
Bone Level Couple Abutment H7	Ti6AL4V ELI	BCA55507
Bone Level Couple Abutment H7	Ti6AL4V ELI	BCA65107
Bone Level Couple Abutment H7	Ti6AL4V ELI	BCA65207
Bone Level Couple Abutment H7	Ti6AL4V ELI	BCA65307
Bone Level Couple Abutment H7	Ti6AL4V ELI	BCA65407
Bone Level Couple Abutment H7	Ti6AL4V ELI	BCA65507

Bone Level Mini Couple Abutment For Short Implants	Ti6AL4V ELI	BMCA5020
Bone Level Mini Couple Abutment For Short Implants	Ti6AL4V ELI	BMCA5030
Bone Level Mini Couple Abutment For Short Implants	Ti6AL4V ELI	BMCA6020
Bone Level Mini Couple Abutment For Short Implants	Ti6AL4V ELI	BMCA6030
Bone Level Mini Couple Abutment For Short Implants	Ti6AL4V ELI	BMCA8020
Bone Level Mini Couple Abutment For Short Implants	Ti6AL4V ELI	BMCA8030

Angled Abutment

Bone Level Mini Angled Abutment	Ti6AL4V ELI	BMAA37151
Bone Level Mini Angled Abutment	Ti6AL4V ELI	BMAA37152
Bone Level Mini Angled Abutment	Ti6AL4V ELI	BMAA37154

PRODUCT NAME	MATERIAL	PRODUCT CODE
Bone Level Angled Abutment	Ti6AL4V ELI	BAA45152
Bone Level Angled Abutment	Ti6AL4V ELI	BAA45154
Bone Level Angled Abutment	Ti6AL4V ELI	BAA45252
Bone Level Angled Abutment	Ti6AL4V ELI	BAA45254
Bone Level Angled Abutment	Ti6AL4V ELI	BAA55152
Bone Level Angled Abutment	Ti6AL4V ELI	BAA55154
Bone Level Angled Abutment	Ti6AL4V ELI	BAA55252
Bone Level Angled Abutment	Ti6AL4V ELI	BAA55254
Bone Level Angled Abutment	Ti6AL4V ELI	BAA65152
Bone Level Angled Abutment	Ti6AL4V ELI	BAA65154
Bone Level Angled Abutment	Ti6AL4V ELI	BAA65252
Bone Level Angled Abutment	Ti6AL4V ELI	BAA65254

Temporary Abutment

Bone Level Mini Temporary Abutment	PEEK	BMTA37
Bone Level Temporary Abutment	PEEK	BTA45
Bone Level Temporary Abutment	PEEK	BTA55

COUPLE System Impression Coping Pick Up

Bone Level Mini Impression Coping Pick Up Long	Ti6AL4V ELI	BMICP37L
Bone Level Mini Impression Coping Pick Up Short	Ti6AL4V ELI	BMICP37S

Bone Level Impression Coping Pick Up Long	Ti6AL4V ELI	BICP45L
Bone Level Impression Coping Pick Up Short	Ti6AL4V ELI	BICP45S
Bone Level Impression Coping Pick Up Long	Ti6AL4V ELI	BICP55L
Bone Level Impression Coping Pick Up Short	Ti6AL4V ELI	BICP55S
Bone Level Impression Coping Pick Up Long	Ti6AL4V ELI	BICP65L
Bone Level Impression Coping Pick Up Short	Ti6AL4V ELI	BICP65S

Bone Level Impression Coping Pick Up for Short Implants	Ti6AL4V ELI	BMSICP50
Bone Level Impression Coping Pick Up for Short Implants	Ti6AL4V ELI	BMSICP60

COUPLE System Impression Coping Transfer

Bone Level Mini Impression Coping Transfer Long	Ti6AL4V ELI	BMICT37L
Bone Level Mini Impression Coping Transfer Short	Ti6AL4V ELI	BMICT37S

Bone Level Impression Coping Transfer	Ti6AL4V ELI	BIP45
Bone Level Impression Coping Transfer for Short Implants	Ti6AL4V ELI	BMSICT50
Bone Level Impression Coping Transfer for Short Implants	Ti6AL4V ELI	BMSICT60

Implant Lab-Analog

Bone Level Mini Implant Lab-Analog	Ti6AL4V ELI	BMFLA
Bone Level Implant Lab-Analog	Ti6AL4V ELI	BFLA

SOLID SYSTEM**SOLID Abutment**

Bone Level Mini Solid Abutment	Ti6AL4V ELI	BMSA3710
Bone Level Mini Solid Abutment	Ti6AL4V ELI	BMSA3720
Bone Level Mini Solid Abutment	Ti6AL4V ELI	BMSA3730
Bone Level Mini Solid Abutmentk	Ti6AL4V ELI	BMSA3740
Bone Level Mini Solid Abutment	Ti6AL4V ELI	BMSA3750

Bone Level Solid Abutment	Ti6AL4V ELI	BSA4510
Bone Level Solid Abutment	Ti6AL4V ELI	BSA4520
Bone Level Solid Abutment	Ti6AL4V ELI	BSA4530
Bone Level Solid Abutment	Ti6AL4V ELI	BSA4540

PRODUCT NAME	MATERIAL	PRODUCT CODE
Bone Level Solid Abutment	Ti6AL4V ELI	BSA4550
Bone Level Solid Abutment	Ti6AL4V ELI	BSA5510
Bone Level Solid Abutment	Ti6AL4V ELI	BSA5520
Bone Level Solid Abutment	Ti6AL4V ELI	BSA5530
Bone Level Solid Abutment	Ti6AL4V ELI	BSA5540
Bone Level Solid Abutment	Ti6AL4V ELI	BSA5550

SOLID Abutment Impression Cap

Bone Level Mini Solid Abutment Impression Cap	POM	BMSAICap37
Bone Level Solid Abutment Impression Cap	POM	BSAICap45
Bone Level Solid Abutment Impression Cap	POM	BSAICap55

SOLID Abutment Lab-Analog

Bone Level Mini Solid Abutment Lab-Analog	Ti6AL4V ELI	BMSALA37
Bone Level Solid Abutment Lab-Analog	Ti6AL4V ELI	BSALA45
Bone Level Solid Abutment Lab-Analog	Ti6AL4V ELI	BSALA55

O-RING SYSTEM**O-RING Abutment**

Bone Level Mini O-Ring Abutment	Ti6AL4V ELI	BMORA05
Bone Level Mini O-Ring Abutment	Ti6AL4V ELI	BMORA20
Bone Level Mini O-Ring Abutment	Ti6AL4V ELI	BMORA40

Bone Level O-Ring Abutment	Ti6AL4V ELI	BORA05
Bone Level O-Ring Abutment	Ti6AL4V ELI	BORA10
Bone Level O-Ring Abutment	Ti6AL4V ELI	BORA20
Bone Level O-Ring Abutment	Ti6AL4V ELI	BORA30
Bone Level O-Ring Abutment	Ti6AL4V ELI	BORA40
Bone Level O-Ring Abutment	Ti6AL4V ELI	BORA60

Retainer

O-Ring Retainer		ORR
O-Ring Retainer Closed		ORRc
O-Ring Retainer Plastic Cap (3 pieces Pink, Yellow, Green)		ORRo
O-Ring Directional Rings (3 pieces 0, 7, 14 Degree)		ORR-A
O-Ring Retainer Pink 900 gr		ORRO-p
O-Ring Retainer Yelow 500 gr		ORRO-y
O-Ring Retainer Green 350 gr		ORRO-g

O-RING Lab Analog

O-Ring Lab-Analog	Ti-G4	ORLA
-------------------	-------	------

LOCATOR SYSTEM**LOCATOR Abutment**

Bone Level Locator Mini Abutment	Ti6AL4V ELI	BMLA15
Bone Level Locator Mini Abutment	Ti6AL4V ELI	BMLA25
Bone Level Locator Mini Abutment	Ti6AL4V ELI	BMLA35
Bone Level Locator Mini Abutment	Ti6AL4V ELI	BMLA45
Bone Level Locator Mini Abutment	Ti6AL4V ELI	BMLA55
Bone Level Locator Mini Abutment	Ti6AL4V ELI	BMLA65

Bone Level Locator Abutment	Ti6AL4V ELI	BLA15
Bone Level Locator Abutment	Ti6AL4V ELI	BLA25
Bone Level Locator Abutment	Ti6AL4V ELI	BLA35

PRODUCT NAME	MATERIAL	PRODUCT CODE
Bone Level Locator Abutment	Ti6AL4V ELI	BLA45
Bone Level Locator Abutment	Ti6AL4V ELI	BLA55
Bone Level Locator Abutment	Ti6AL4V ELI	BLA65

LOCATOR Retainer

Locator Retainer (black processing cap included)	Ti6AL4V ELI	LMHt
Locator Cap (4 pieces cap included)	PEEK	LRI

LOCATOR Analog

Bone Level Locator Lab-Analog	Ti6AL4V ELI	BLLA
-------------------------------	-------------	------

OCTA SYSTEM**OCTA Abutment**

Bone Level Mini Octa Abutment	Ti6AL4V ELI	BMOA10
Bone Level Mini Octa Abutment	Ti6AL4V ELI	BMOA20
Bone Level Mini Octa Abutment	Ti6AL4V ELI	BMOA30
Bone Level Mini Octa Abutment	Ti6AL4V ELI	BMOA40
Bone Level Mini Octa Abutment	Ti6AL4V ELI	BMOA50

Bone Level Octa Abutment	Ti6AL4V ELI	BOA10
Bone Level Octa Abutment	Ti6AL4V ELI	BOA20
Bone Level Octa Abutment	Ti6AL4V ELI	BOA30
Bone Level Octa Abutment	Ti6AL4V ELI	BOA40
Bone Level Octa Abutment	Ti6AL4V ELI	BOA50

OCTA Abutment Healing Cap

Octa Abutment Healing Cap	Ti-G4	OAHCAP
Octa Abutment Healing Cap Long	Ti-G4	OAHCAP-L

OCTA Abutment Plastic Cylinder

Octa Abutment Plastic Cylinder	POM	OAPICy
--------------------------------	-----	--------

OCTA Abutment Plastic Cylinder Non-Octa

Octa Abutment Plastic Cylinder Non-Octa	POM	OAPICyN
---	-----	---------

OCTA Abutment Titanium Cylinder

Octa Abutment Titanium Cylinder	Ti6AL4V ELI	OATICy
---------------------------------	-------------	--------

OCTA Abutment Titanium Cylinder Non-Octa

Octa Abutment Titanium Cylinder Non-Octa	Ti6AL4V ELI	OATICyN
--	-------------	---------

OCTA System Impression Coping Pick Up

Octa Abutment Impression Coping Pick Up	Ti6AL4V ELI	ICOAP
---	-------------	-------

OCTA System Impression Coping Pick Up Non-Octa

Octa Abutment Impression Coping Pick Up Non-Octa	Ti6AL4V ELI	ICOAPN
--	-------------	--------

OCTA System Impression Coping Transfer

Octa Abutment Impression Coping Transfer	Ti6AL4V ELI	ICOAT
--	-------------	-------

OCTA System Impression Coping Transfer Non-Octa

Octa Abutment Impression Coping Transfer Non-Octa	Ti6AL4V ELI	ICOATN
---	-------------	--------

OCTA Abutment Lab Analog

Octa Abutment Lab-Analog	Ti6AL4V ELI	OALA
--------------------------	-------------	------

PRODUCT NAME	MATERIAL	PRODUCT CODE
--------------	----------	--------------

MULTI UNIT SYSTEM**MULTI UNIT Abutment**

Bone Level Multi Unit Abutment	Ti6AL4V ELI	BMMUA4805
Bone Level Multi Unit Abutment	Ti6AL4V ELI	BMMUA4815
Bone Level Multi Unit Abutment	Ti6AL4V ELI	BMMUA4825
Bone Level Multi Unit Abutment	Ti6AL4V ELI	BMMUA4835
Bone Level Multi Unit Abutment	Ti6AL4V ELI	BMMUA4845
Bone Level Multi Unit Abutment	Ti6AL4V ELI	BMUA4805
Bone Level Multi Unit Abutment	Ti6AL4V ELI	BMUA4815
Bone Level Multi Unit Abutment	Ti6AL4V ELI	BMUA4825
Bone Level Multi Unit Abutment	Ti6AL4V ELI	BMUA4835
Bone Level Multi Unit Abutment	Ti6AL4V ELI	BMUA4845
Bone Level Multi Unit Abutment	Ti6AL4V ELI	BMUA48171
Bone Level Multi Unit Abutment	Ti6AL4V ELI	BMUA48172
Bone Level Multi Unit Abutment	Ti6AL4V ELI	BMUA48173
Bone Level Multi Unit Abutment	Ti6AL4V ELI	BMUA48351
Bone Level Multi Unit Abutment	Ti6AL4V ELI	BMUA48352
Bone Level Multi Unit Abutment	Ti6AL4V ELI	BMUA48353

MULTI UNIT Healing Cap

Bone Level Multi Unit Healing Cap	Ti6AL4V ELI	MUAHCAP
-----------------------------------	-------------	---------

MULTI UNIT Impression Coping Pick Up

Bone Level Multi Unit Impression Coping Pick Up	Ti6AL4V ELI	BMUAICP
---	-------------	---------

MULTI UNIT Abutment Plastic Cylindrical

Bone Level Multi Unit Abutment Plastic Cylindrical	POM	MUAPICYN
--	-----	----------

MULTI UNIT Abutment Titanium Cylinder

Bone Level Multi Unit Abutment Titanium Cylinder	POM	MUATICY
--	-----	---------

MULTI UNIT Lab Analog

Bone Level Multi Unit Abutment Lab Analog	Ti6AL4V ELI	BMUALA
---	-------------	--------

BAR SYSTEM

Bar Burnout		IB
Bar Positioning Burnout		IBP
Bar Housing Burnout		IBH
Yellow Bar Clip		IBClip-y
Pink Bar Clip		IBClip-P
Red Bar Clip		IBClip-r
Bar Matrix Insert Adaptor		BMIA
Parallelometer		TFIC

Tissue Level Implant Hybrid

Tissue Level Hybrid Implant	Ti-G4	TFHR3708
Tissue Level Hybrid Implant	Ti-G4	TFHR3710
Tissue Level Hybrid Implant	Ti-G4	TFHR3712
Tissue Level Hybrid Implant	Ti-G4	TFHR3714
Tissue Level Hybrid Implant	Ti-G4	TFHR4308
Tissue Level Hybrid Implant	Ti-G4	TFHR4310
Tissue Level Hybrid Implant	Ti-G4	TFHR4312
Tissue Level Hybrid Implant	Ti-G4	TFHR4314
Tissue Level Hybrid Implant	Ti-G4	TFHR4808
Tissue Level Hybrid Implant	Ti-G4	TFHR4810
Tissue Level Hybrid Implant	Ti-G4	TFHR4812

PRODUCT NAME	MATERIAL	PRODUCT CODE
Tissue Level Hybrid Implant	Ti-G4	TFHR4814
Tissue Level Implant Cylindrical		
Tissue Level Short Hybrid Implant	Ti-G4	TFSR4304
Tissue Level Short Hybrid Implant	Ti-G4	TFSR4305
Tissue Level Short Hybrid Implant	Ti-G4	TFSR4306
Tissue Level Short Hybrid Implant	Ti-G4	TFSR4804
Tissue Level Short Hybrid Implant	Ti-G4	TFSR4805
Tissue Level Short Hybrid Implant	Ti-G4	TFSR4806
Tissue Level Short Hybrid Implant	Ti-G4	TWFSR5504
Tissue Level Short Hybrid Implant	Ti-G4	TWFSR5505
Tissue Level Short Hybrid Implant	Ti-G4	TWFSR5506
Tissue Level Wide Implant Hybrid		
Tissue Level Wide Implant Hybrid	Ti-G4	TWFHR5508
Tissue Level Wide Implant Hybrid	Ti-G4	TWFHR5510
Tissue Level Wide Implant Hybrid	Ti-G4	TWFHR5512
Healing Abutment		
Tissue Level Healing Abutment	Ti-G4	THA35
Tissue Level Healing Abutment	Ti-G4	THA55
Healing Abutment Wide		
Tissue Level Healing Abutment Wide	Ti-G4	THAW35
Tissue Level Healing Abutment Wide	Ti-G4	THAW55
COUPLE SYSTEM		
COUPLE Abutment		
Tissue Level Couple Abutment	Ti-G4	TCA10
Tissue Level Couple Abutment	Ti-G4	TCA20
Tissue Level Couple Abutment	Ti-G4	TCA30
Tissue Level Couple Abutment	Ti-G4	TCA40
COUPLE Abutment Wide		
Tissue Level Couple Abutment Wide	Ti-G4	TCAW10
Tissue Level Couple Abutment Wide	Ti-G4	TCAW20
Tissue Level Couple Abutment Wide	Ti-G4	TCAW30
Tissue Level Couple Abutment Wide	Ti-G4	TCAW40
Angled Abutment		
Tissue Level Angled Abutment	Ti-G4	TAA15
Tissue Level Angled Abutment	Ti-G4	TAA25
Syn Octa Abutment		
Tissue Level Syn Octa Abutment	Ti-G4	TSOA
Impression Coping Pick Up		
Tissue Level Impression Coping Pick Up	Ti-G4	TICP
Impression Coping Pick Up Wide		
Tissue Level Impression Coping Pick Up Wide	Ti-G4	TICPW
Impression Coping Transfer		
Tissue Level Impression Coping Transfer	Ti-G4	TICT

PRODUCT NAME	MATERIAL	PRODUCT CODE
Implant Lab-Analog		
Tissue Level Implant Lab-Analog	Ti-G4	TFLA
Implant Wide Lab-Analog		
Tissue Level Implant Wide Lab-Analog	Ti-G4	TFLLA
SOLID SYSTEM		
SOLID Abutment		
Tissue Level Solid Abutment	Ti-G4	TSA40
Tissue Level Solid Abutment	Ti-G4	TSA55
Tissue Level Solid Abutment	Ti-G4	TSA70
SOLID Abutment Wide		
Tissue Level Solid Abutment Wide	Ti-G4	TSAL40
Tissue Level Solid Abutment Wide	Ti-G4	TSAL50
Tissue Level Solid Abutment Wide	Ti-G4	TSAL70
SOLID Abutment Positioning Cylinder		
Tissue Level Solid Abutment Positioning Cylinder	POM	TSAPoCy
SOLID Abutment Plastic Cylinder		
Tissue Level Solid Abutment Plastic Cylinder Bridge	POM	TSAPICb
Tissue Level Solid Abutment Plastic Cylinder Single Unit	POM	TSAPICc
SOLID Abutment Impression Cap		
Tissue Level Solid Abutment Impression Cap	POM	TSAlCap
SOLID Abutment Lab-Analog		
Tissue Level Solid Abutment Lab-Analog	Ti-G4	TSALA40
Tissue Level Solid Abutment Lab-Analog	Ti-G4	TSALA55
Tissue Level Solid Abutment Lab-Analog	Ti-G4	TSALA70
SOLID Abutment Wide Lab-Analog		
Tissue Level Solid Abutment Wide Lab-Analog	Ti-G4	TSALLA40
Tissue Level Solid Abutment Wide Lab-Analog	Ti-G4	TSALLA55
Tissue Level Solid Abutment Wide Lab-Analog	Ti-G4	TSALLA70
O-RING Abutment		
Tissue Level O-Ring Abutment	Ti-G4	TORA05
Tissue Level O-Ring Abutment	Ti-G4	TORA20
Tissue Level O-Ring Abutment	Ti-G4	TORA40
O-RING Analog		
O-ring Lab-Analog	Ti6AL4V ELI	ORLA
LOCATOR Abutment		
Tissue Level Locator Abutment	Ti6AL4V ELI	TLA15
Tissue Level Locator Abutment	Ti6AL4V ELI	TLA25
Tissue Level Locator Abutment	Ti6AL4V ELI	TLA35
Tissue Level Locator Abutment	Ti6AL4V ELI	TLA45
Tissue Level Locator Abutment	Ti6AL4V ELI	TLA55
Tissue Level Locator Abutment	Ti6AL4V ELI	TLA65
LOCATOR Retainer		
Locator Retainer (Black processing cap included)	Ti6AL4V ELI	LMHt
Locator Cap (4 pieces cap included)	PEEK	LRI

PRODUCT NAME	MATERIAL	PRODUCT CODE
LOCATOR Analog		
Tissue Level Locator Lab-Analog	Ti6AL4V ELI	TLLA
OCTA SYSTEM		
OCTA Abutment		
Tissue Level Octa Abutment	Ti-G4	TOA
OCTA Abutment Healing Cap		
OCTA Abutment Healing Cap	Ti-G4	OAHCap
OCTA Abutment Healing Cap	Ti-G4	OAHCAP-L
OCTA Abutment Plastic Cylinder		
OCTA Abutment Plastic Cylinder	POM	OAPICy
OCTA Abutment Plastic Cylinder Non-Octa		
Octa Abutment Plastic Cylinder Non-Octa	POM	OAPICyN
OCTA Abutment Titanium Cylinder		
OCTA Abutment Titanium Cylinder	Ti6AL4V ELI	OATICy
OCTA Abutment Titanium Cylindrical Non-Octa		
OCTA Abutment Titanium Cylinder Non-Octa	Ti6AL4V ELI	OATICyN
OCTA Abutment Impression Coping Pick Up		
Octa Abutment Impression Coping Pick Up	Ti-G4	ICOAP
OCTA Abutment Impression Coping Pick Up Non-Octa		
Octa Abutment Impression Coping Pick Up Non-Octa	Ti-G4	ICOAPN
OCTA Abutment Impression Coping Transfer		
Octa Abutment Impression Coping Transfer	Ti-G4	ICOAT
OCTA Abutment Impression Coping Transfer Non-Octa		
Octa Abutment Impression Coping Transfer Non-Octa	Ti-G4	ICOATN
OCTA Abutment Lab Analog		
Octa Abutment Lab-Analog	Ti-G4	OALA
Surgical Sets		
Surgical Set		BTSK
Surgical Set Short		BTSSK
Prosthetic Kit		BTPK
Surgical Set Aggressor		BASK
Zygoma Surgical Set		ZSK
DIGITAL SOLUTIONS		
Bone Level Mini Premill Abutment		
Bone Level Mini Premill Abutment	Ti6AL4V ELI	BMPA10
Bone Level Mini Premill Abutment	Ti6AL4V ELI	BMPA14
Scan Body		
Bone Level Mini Scan Body		PMSB
Digital Analog		
Bone Level Mini Digital Analog		BMFDLA

PRODUCT NAME	MATERIAL	PRODUCT CODE
Bone Level Premill Abutment		
Bone Level Premill Abutment	Ti6AL4V ELI	BPA10
Bone Level Premill Abutment	Ti6AL4V ELI	BPA14
Bone Level Premill Abutment	Ti6AL4V ELI	BPA16
Scan Body		
Bone Level Scan Body		PSB
Digital Analog		
Bone Level Digital Analog		BFDLA
Tissue Level Premill Abutment		
Tissue Level Premill Abutment	Ti6AL4V ELI	TPA10
Tissue Level Premill Abutment	Ti6AL4V ELI	TPA14
Tissue Level Premill Abutment	Ti6AL4V ELI	TPA16
Scan Body		
Tissue Level Scan Body		TSB
Digital Analog		
Tissue Level Digital Analog		TFDLA
Tissue Level Wide Premill Abutment		
Tissue Level Wide Premill Abutment	Ti6AL4V ELI	TWPA10
Tissue Level Wide Premill Abutment	Ti6AL4V ELI	TWPA14
Tissue Level Wide Premill Abutment	Ti6AL4V ELI	TWPA16
Scan Body		
Tissue Level Wide Scan Body		TWSB
Tissue Level Wide Digital Analog		TWFDLA
Ti-BASE SYSTEM		
Ti-BASE Mini Abutment		
Bone Level Mini Ti-base Abutment	Ti6AL4V ELI	BMTIA05
Ti-BASE Mini Scan Body		
Bone Level Mini Ti-base Scan Body		TIMSB
Ti-BASE Abutment		
Bone Level Ti-base Abutment	Ti6AL4V ELI	BTIA05
Ti-BASE Scan Body		
Ti-base Scan Body		TISB
MULTI UNIT SYSTEM		
MULTI UNIT Scan Body		
MULTI UNIT Scan Body		PMUSB
MULTI UNIT Digital Analog		
MULTI UNIT Digital Analog		BMDLA
MULTI UNIT Zr-Base		
MULTI UNIT Zr-Base		MUTB

PRODUCT NAME	MATERIAL	PRODUCT CODE
OCTA SYSTEM		
OCTA Scan Body		
OCTA Scan Body		POSB
OCTA Digital Analog		
OCTA Digital Analog		BODLA
OCTA Zr-Base		
OCTA Zr-Base		OTB
ZYGOMA		
Zygoma Implant		
Zygoma Implant	Ti6AL4V ELI	ZYG35
Zygoma Implant	Ti6AL4V ELI	ZYG37,5
Zygoma Implant	Ti6AL4V ELI	ZYG40
Zygoma Implant	Ti6AL4V ELI	ZYG42,5
Zygoma Implant	Ti6AL4V ELI	ZYG45
Zygoma Implant	Ti6AL4V ELI	ZYG47,5
Zygoma Implant	Ti6AL4V ELI	ZYG50
Zygoma Implant	Ti6AL4V ELI	ZYG52,5
Zygoma Implant	Ti6AL4V ELI	ZYG55
Zygoma Implant	Ti6AL4V ELI	ZYG57,5
Zygoma Implant	Ti6AL4V ELI	ZYG60
Oncological Zygoma Implant		
Oncological Zygoma Implant	Ti6AL4V ELI	ZONC25
Oncological Zygoma Implant	Ti6AL4V ELI	ZONC27,5
Oncological Zygoma Implant	Ti6AL4V ELI	ZONC30
Oncological Zygoma Implant	Ti6AL4V ELI	ZONC32,5
Atrophic Maxillary Zygoma Implant		
Atrophic Maxillary Zygoma Implant	Ti6AL4V ELI	ZAM35
Atrophic Maxillary Zygoma Implant	Ti6AL4V ELI	ZAM37,5
Atrophic Maxillary Zygoma Implant	Ti6AL4V ELI	ZAM40
Atrophic Maxillary Zygoma Implant	Ti6AL4V ELI	ZAM42,5
Atrophic Maxillary Zygoma Implant	Ti6AL4V ELI	ZAM45
Atrophic Maxillary Zygoma Implant	Ti6AL4V ELI	ZAM47,5
Atrophic Maxillary Zygoma Implant	Ti6AL4V ELI	ZAM50
Atrophic Maxillary Zygoma Implant	Ti6AL4V ELI	ZAM52,5
Atrophic Maxillary Zygoma Implant	Ti6AL4V ELI	ZAM55
Atrophic Maxillary Zygoma Implant	Ti6AL4V ELI	ZAM57,5
Atrophic Maxillary Zygoma Implant	Ti6AL4V ELI	ZAM60
Zygoma Healing Abutment		
Zygoma Healing Abutment Short	Ti6AL4V ELI	ZHA4330
Zygoma Healing Abutment Long	Ti6AL4V ELI	ZHA4350
Zygoma COUPLE Abutment Straight		
Zygoma Couple Abutment Straight	Ti6AL4V ELI	ZCA4330
Zygoma Couple Abutment	Ti6AL4V ELI	ZCA4350
Zygoma COUPLE Angled Abutment		
Zygoma Couple Angled Abutment	Ti6AL4V ELI	ZAA43203
Zygoma Couple Angled Abutment	Ti6AL4V ELI	ZAA43205

PRODUCT NAME	MATERIAL	PRODUCT CODE
Zygoma MULTI UNIT Abutment		
Zygoma Multi Unit Abutment	Ti6AL4V ELI	ZMUA431705
Zygoma Multi Unit Abutment	Ti6AL4V ELI	ZMUA43171
Zygoma Multi Unit Abutment	Ti6AL4V ELI	ZMUA43172
Zygoma Multi Unit Abutment	Ti6AL4V ELI	ZMUA43173
Zygoma Multi Unit Abutment	Ti6AL4V ELI	ZMUA43175
Zygoma Impression Coping Pick Up		
Zygoma Impression Coping Pick Up	Ti6AL4V ELI	ZICP
Zygoma Plastic Cylinder Non-Octa		
Zygoma Plastic Cylinder Non-Octa	Acetal	ZPICYN
Zygoma Lab Analog		
Zygoma Lab Analao	Ti6AL4V ELI	ZLA
Short Surgical Set Drills		
Cylindrical Drills		SD2804
Cylindrical Drills		SD2805
Cylindrical Drills		SD2806
Cylindrical Drills		SD3704
Cylindrical Drills		SD4304
Cylindrical Drills		SD4305
Cylindrical Drills		SD4306
Cylindrical Drills		SD4804
Cylindrical Drills		SD4805
Cylindrical Drills		SD4806
Cylindrical Drills		SD5504
Cylindrical Drills		SD5505
Cylindrical Drills		SD5506
Tapping Drills		
Tapping Drills		TP4304
Tapping Drills		TP4804
Tapping Drills		TP5504
Pilot Drill Short		
Pilot Drill Short		PLDS
Surgical Set Drills		
2.2 Drills		
Cylindrical Drills		SD2208
Cylindrical Drills		SD2210
Cylindrical Drills		SD2212
Cylindrical Drills		SD2214
2.8 Drills		
Cylindrical Drills		SD2808
Cylindrical Drills		SD2810
Cylindrical Drills		SD2812
Cylindrical Drills		SD2814

PRODUCT NAME	MATERIAL	PRODUCT CODE
3.7 Drills		
Conical Drills		TD3708
Conical Drills		TD3710
Conical Drills		TD3712
Conical Drills		TD3714
4.3 Drills		
Conical Drills		TD4308
Conical Drills		TD4310
Conical Drills		TD4312
Conical Drills		TD4314
4.8 Drills		
Conical Drills		TD4808
Conical Drills		TD4810
Conical Drills		TD4812
Conical Drills		TD4814
5.5 Drills		
Conical Drills		TD5508
Conical Drills		TD5510
Conical Drills		TD5512
Neck Drill		ND3.3
Neck Drill		ND3.7
Neck Drill		ND4.3
Neck Drill		ND4.8
Neck Drill		ND5.5
Pilot Drill		PLD
Point Drill		PD
Depth Gauge		DP3.7
Depth Gauge		DP4.3
Parallel Pin		PP2.2
Drill Extension		D/E
Implant Drivers		
Bone Level Implant Ratchet Driver Short		BFDRS
Bone Level Implant Ratchet Driver Long		BFDRL
Bone Level Implant Hand Piece Driver Short		BFDMS
Bone Level Implant Hand Piece Driver Long		BFDML

PRODUCT NAME	MATERIAL	PRODUCT CODE
Tissue Level Implant Ratchet Driver Short		TFDRS
Tissue Level Implant Ratchet Driver Long		TFDRL
Tissue Level Implant Hand Piece Driver Short		TFDMS
Tissue Level Implant Hand Piece Driver Long		TFDML
Bone Level Implant Mini Ratchet Driver Short		BMFDRS
Bone Level Implant Mini Ratchet Driver Long		BMFDRL
Bone Level Mini Implant Hand Piece Driver Short		BMFDML
Bone Level Mini Implant Hand Piece Driver Long		BMFDMS
Torque Controlled Ratchet		T-Ratchet
HEX Drivers		
Hex Driver Ratchet Short		1.2HDRS
Hex Driver Ratchet Long		1.2HDRL
Hex Driver Ratchet Extra Short		1.2HDRXS
Hex Driver Ratchet Extra Long		1.2HDRXL
Hex Driver Hand Piece Short		1.2HDMS
Hex Driver Hand Piece Long		1.2HDML
AGGRESSOR Surgical Set Parts		
Cylindrical Drill		SD2816
Conical Aggressive Drill		TAD3710
Conical Aggressive Drill		TAD3712
Conical Aggressive Drill		TAD3714
Conical Aggressive Drill		TAD4310
Conical Aggressive Drill		TAD4312
Conical Aggressive Drill		TAD4314
Conical Aggressive Drill		TAD4810
Conical Aggressive Drill		TAD4812
Conical Aggressive Drill		TAD4814
Bone Level Aggressive Reamer Drill		BAR4.5
Bone Level Aggressive Reamer Drill		BAR5.5
Bone Level Aggressive Reamer Drill		BAR6.5
Point Drill		PD
Parallel Pin		PP-17
Parallel Pin		PP-35
Bone Level Aggressive Guide Pin		BASGPin
Zygoma Surgical Set Parts		
Point Drill		PD2970
Pilot Drill Short		PLD3565
Pilot Drill Long		PLD35100
Twist Drill Short		TWD2965
Twist Drill Long		TWD29100

PRODUCT NAME	MATERIAL	PRODUCT CODE
Twist Drill Short		TWD3565
Twist Drill Long		TWD35100
Zygoma Drill Holder Short		ZDGS
Zygoma Drill Holder Long		ZDG
Zygoma Depth Gauge Angled		ZDIA
Zygoma Depth Gauge Straight		ZDIS
Zygoma Handle		ZHDL

Prosthetic Driver

O-ring Abutment Driver Short		ORADS
O-ring Abutment Driver Long		ORADL
Octa Abutment Driver Short		OADS
Octa Abutment Driver Long		OADL
Locator Abutment Driver		LAD
Solid Abutment Driver		SAD
ORRO Insert Adaptor		OIA
Bar Matrix Insert Adaptor		BMIA
Multi-Unit Abutment Driver		MURD

Screws**Closing Screw****Bone Level**

Bone Level Mini Closing Screw	Ti6AL4V ELI	BMCLS
Bone Level Closing Screw	Ti6AL4V ELI	BCLS

Tissue Level

Tissue Level Closing Screw Wide	Ti-G4	TCLSL
Tissue Level Closing Screw	Ti-G4	TCLSS
Tissue Level Closing Screw Wide	Ti-G4	TCLSW

Abutment Screws**Bone Level**

Bone Level Mini Abutment Screw	Ti6AL4V ELI	BMSAS
Bone Level Abutment Screw	Ti6AL4V ELI	BAS
Bone Level Multi Unit Abutment Screw	Ti6AL4V ELI	BMUASS

Tissue Level

Tissue Level Abutment Screw	Ti-G4	TAS
-----------------------------	-------	-----

Octa Abutment Occlusal Screw	Ti6AL4V ELI	OAS
Multi-Unit Abutment Occlusal Screw	Ti6AL4V ELI	MUAHS